

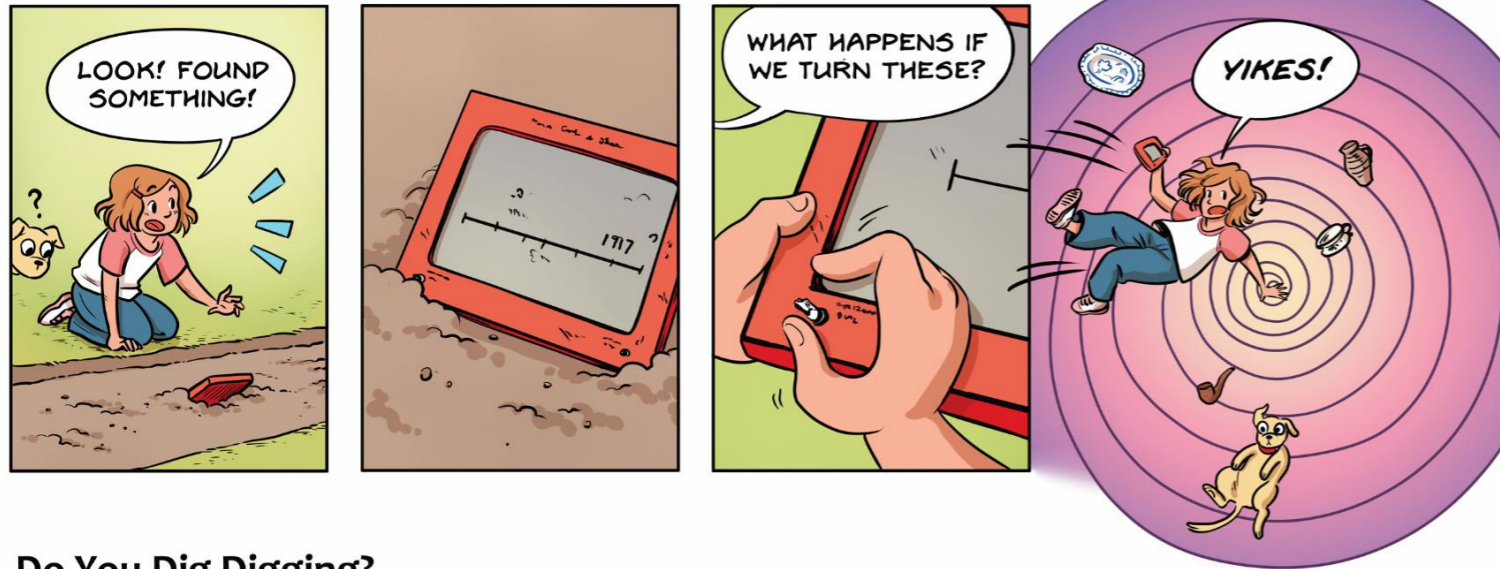
WHITTLE TIMES



Georgia Litherland . Sally Jane Thompson

PEELING BACK THE LAYERS

Peaceful Under White Farm buzzed with activity and visitors in summer 2016. Archaeologists and volunteers excavated trenches in 2 fields searching for signs of the past.



Do You Dig Digging?

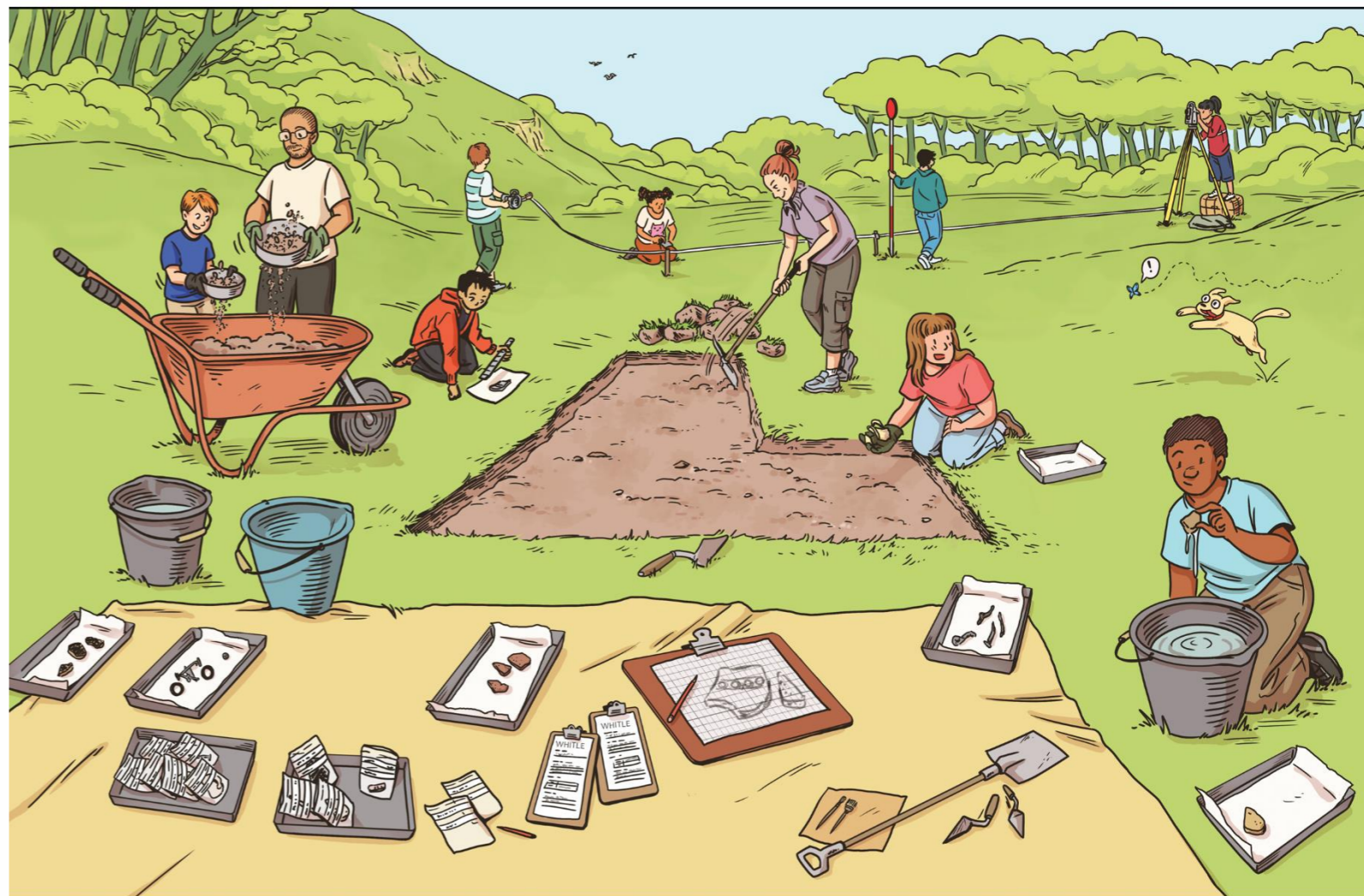
These archaeology jobs are listed in the order they happen on an excavation site. Can you find all 16 jobs in the wordsearch?

p z q d r a w f h s a w
 v h a l b z f i n d t e
 g e o p h y s i c s e i
 f r u t e d i e n g r g
 a n v p o s n s h w p h
 x t o k y g w y b v r z
 r t s d z u r l o d e l
 e r u s a e m a h b t c
 c o r i y k o n p x n a
 o p v e p x d a v h i o
 r e e v o t u o k r a m
 d r y e t a v a c x e x

- 1 survey
- 2 geophysics
- 3 mark out
- 4 deturf
- 5 excavate
- 6 find
- 7 photograph
- 8 sieve
- 9 wash
- 10 measure
- 11 weigh
- 12 record
- 13 draw
- 14 analyse
- 15 interpret
- 16 report

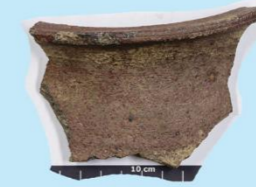
WHICH JOBS CAN YOU FIND IN THE PICTURES OPPOSITE?

Can you spot all 10 differences between the pictures?



WHAT'S COOKING?

Look at the finds photos carefully. Now look at the farm kitchen scenes. Each kitchen contains one of the finds before it was broken and buried. Can you find them all?



Guess what? All the people are real people who lived at White in the past.

196 children excavated, cleaned and recorded finds.



Margery Horobin's Tudor kitchen.



Radiocarbon dating revealed the oldest find to be a piece of charcoal burnt from a tree dated 1350 - nearly 700 years ago!



Teatime for the Slack family.



Cooking with the Harrisons over 300 years ago.



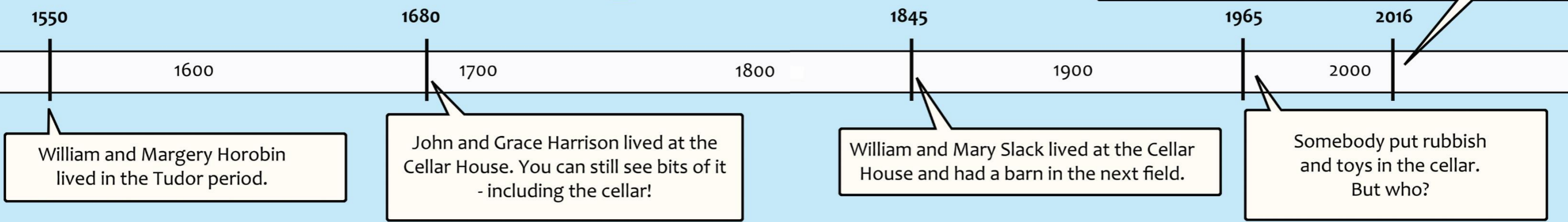
A grand total of 688 finds were excavated and recorded!



Children lived and played at Under White Farm.

Peeling Back the Layers uncovered the remains of the Horobins' and Harrisons' houses, and the Slacks' barn.

PEOPLE OF THE LAYERS





In 1725 famous author and spy Daniel Defoe travelled near Whitle and called the area 'all oatcakes, cheese and ale'.



Cook traditional Staffordshire oatcakes for breakfast, lunch or tea. Or buy them and make up your own fillings at home.

Ingredients

- 250g fine oatmeal
 - 250g wholewheat or plain flour
 - 1 tsp salt
 - 15g fresh yeast
 - 850ml warm milk and water, mixed half and half
 - 1 tsp sugar
- 1 big bowl, 1 clean cloth and 1 frying pan or griddle.



Method

1. Add 1 tsp salt to 250g flour and 250g oatmeal in a bowl.
2. Dissolve 15g yeast with a little warm liquid and add 1 tsp sugar. Wait for this mix to get frothy.
3. Mix dry ingredients with the yeast mix and the rest of the warm liquid to make a batter.
4. Cover with a clean cloth and leave in a warm place for 1 hour.
5. Put spoonfuls of mixture onto a well-greased griddle or frying pan. When the mixture starts to bubble, flip the oatcake over to cook the other side.

Eat them immediately - on their own or with a sweet or savoury filling.

Whitle farmers grew oats and kept cows, so they ate oatcakes and cheese. Bread was a rare treat.

The traditional filling was Staffordshire cheese.

Bizarre Bakestones!



Before modern cookers, Whitle farmers used bakestones for cooking oatcakes over the fire. Weirdly, some bakestones were actually made of iron! They were so important that one Whitle farmer passed his on in his will when he died.



HELP FARMER SLACK take his cheese to Longnor market



Peeling Back the Layers

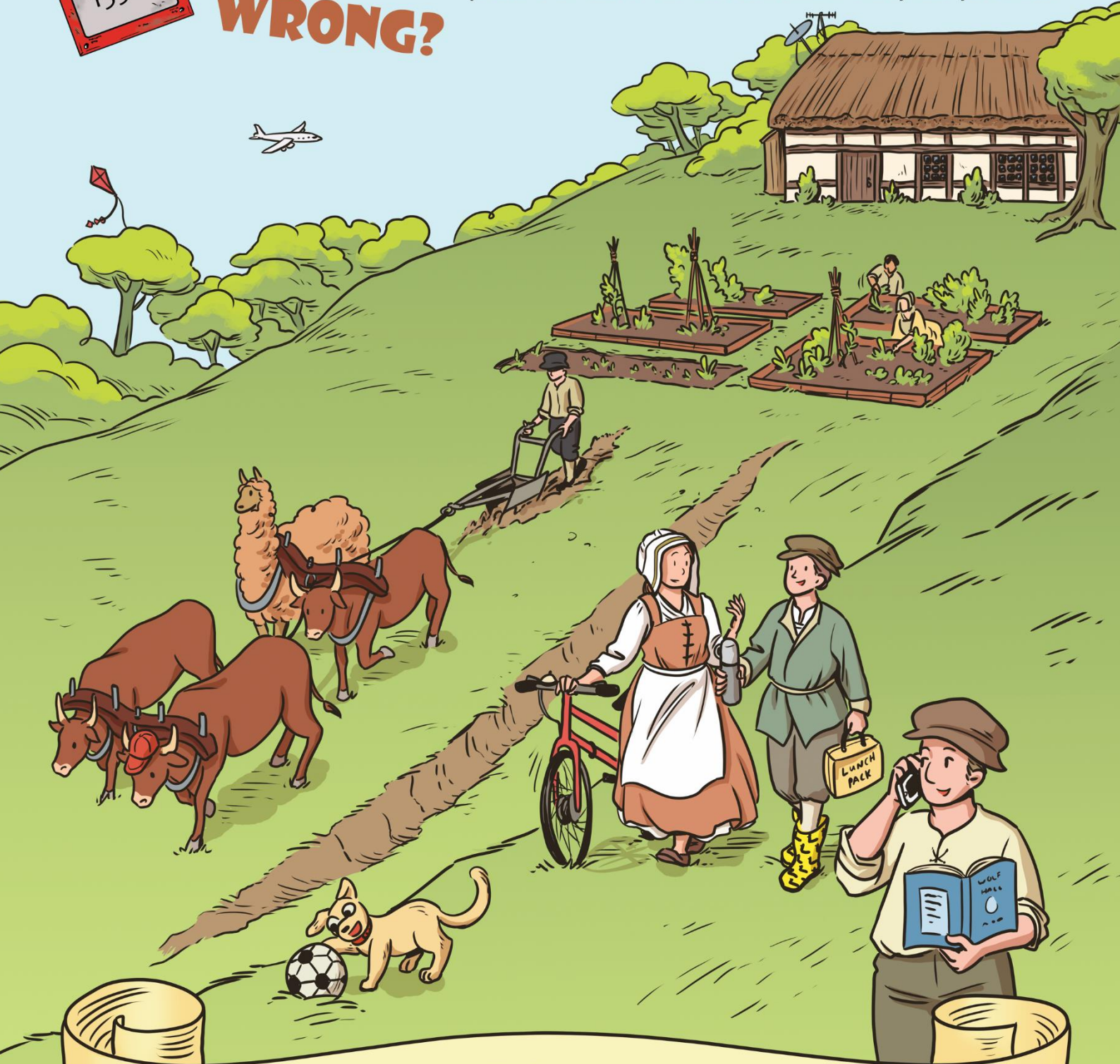
was managed by the Tudor Farming Interpretation Group and funded by the Heritage Lottery Fund, the Peak District Sustainable Development Fund and the Mick Aston Fund supported by the Council for British Archaeology and English Heritage



1550

WHAT'S WRONG?

Oh no! Lots of modern things have crept in to this picture of Tudor Whitle Farm. How many can you find?



Roll of Honour

Huge thanks to all the young volunteers who took part.

Biggin CE Primary School
Blackshaw Moor CE (VC) Primary School
Buxton Community School
Earl Sterndale CE Primary School
Hartington CE Primary School
Hollinsclough CE Academy
Lady Manners School, Bakewell

Manifold CE Academy
Monyash CE Primary School
St Bartholomew's CE (VC) Primary School, Longnor
St Thomas More Catholic School, Buxton
The FitzHerbert CE (VA) Primary School,
Fenny Bentley
Young Archaeologists' Club, Ilam