

An Assessment of Ceramic Finds
Recovered During the *Peeling Back the Layers*
Community Archaeology Project
Under Whitle Farm
Longnor
Staffordshire

Produced by
Jonathan Goodwin
of
Stoke-on-Trent Archaeology Service
Floor 3, Civic Centre
Glebe Street, Stoke-on-Trent ST1 4HH
Tel: 01782 232597
Email: jon.goodwin@stoke.gov.uk

Report No. 398
January 2017

Contents

1.0 Introduction	1
2.0 Assessment methodology	1
3.0 Trench summaries	2
<i>Trench 1</i>	2
<i>Trench 2</i>	3
<i>Trench 3</i>	5
<i>Trench 4</i>	7
4.0 Discussion	10
5.0 Conclusions	16
5.0 Acknowledgements	16
6.0 References	17
Table 1: Probable date ranges for ceramics from Under White	8
Appendix 1: Ceramic ware/ fabric types from Under White	
Appendix 2: Ceramic vessel forms from Under White	
Appendix 3: Catalogue of ceramic finds from Under White	
PLATE 1: Early/ mid 18th-century white salt-glazed stoneware sherd with rouletted decoration from Trench 1 (002)	20
PLATE 2: Slip-decorated mid 19th-century whiteware bowl sherd with dendritic 'mocha' design from Trench 1 (002) (left). A more complete example with similar decoration excavated in Tunstall, Stoke-on-Trent (right)	20

PLATE 3: Trailed slipwares of late 17th-/ early-18th-century date from Trench 2 (101) (left) and (110) (right)	21
PLATE 4: Seventeenth-century yellow wares from Trench 2 (110)	21
PLATE 5: Late 17th-/ early 18th-century mottled wares from Trench 2 (110) .	22
PLATE 6: Exterior view of an 18th-century slip-coated ware bowl from Trench 2 (110)	22
PLATE 7: Nineteenth-century coarse earthenware pancheon rim/body sherd from Trench 2 (101)	23
PLATE 8: Nineteenth-century brown stonewares with moulded and rouletted decoraton from Trench 2 (101)	23
PLATE 9: Late 18th-/ early 19th-century creamware sherd from Trench 2 (101) with over-glaze bat-printed design	24
PLATE 10: A collection of early/ mid-19th-century under-glaze painted pearlwares from Trench 2 (110)	24
PLATE 11: ‘Shell-edged’ pearlware plate rim sherds of early-mid-19th-century date from Trench 2 (110)	25
PLATE 12: Mid-19th-century ‘Shining Black’ or ‘Egyptian ware’ teapot and teapot cover sherds from Trench 2 (101)	25
PLATE 13: (Left) early-mid-19th-century under-glaze transfer-printed pearlware plate sherd with ‘Willow’ pattern from Trench 2 (112). (Right) a more complete ‘example excavated from Tunstall, Stoke-on-Trent	26

- PLATE 14: (Left) mid-late 19th-century under-glaze transfer-printed whiteware plate sherds with ‘Asiatic Pheasants’ pattern from Trench 3 (201). (Right) a more complete example excavated from Tunstall, Stoke-on-Trent 26**
- PLATE 15: Late 17th-century Midlands Purple ware butter pot from Trench 3 (206), with possible remnant of an impressed quality-control stamp 27**
- PLATE 16: Possible late medieval/ early post-medieval earthenware sherd from Trench 3 (224), with underside of the vessel to the left and reduced interior to the right 27**
- PLATE 17: Possible late-medieval orange ware sherd from Trench 3 (230) ... 28**
- PLATE 18: Late 16th-/ 17th-century Midlands Purple ware cistern/ large jar rim sherd from Trench 3 (232) 28**
- PLATE 19: Underside of a Midlands Purple ware cistern/ large jar base sherd, showing firing scar, probably from a Cistercian ware vessel 29**

1.0 Introduction

As part of the *Peeling Back the Layers* community archaeology project, an excavation was undertaken at Under Whitle Farm, located in the Dove Valley between the villages of Sheen and Longnor. The investigation was undertaken in two phases between June and September 2016, and involved the excavation of four trenches sited to investigate features identified by earlier documentary, archaeological, topographical and geophysical survey (Parker Heath 2016a, 8). The excavations generated a ceramic assemblage comprising 2,017 sherds (10,937g in weight). Stoke-on-Trent Archaeology Service was commissioned to produce an assessment of this material.

2.0 Assessment methodology

The ceramic finds from Under Whitle were sorted on site by trench and context, and further organised by ware/ fabric type, decoration and vessel form during post-excavation assessment. Primary quantification was by sherd count and weight, and a minimum vessel count was also conducted. This latter quantification was based principally on the presence of rims, but also components such as bases, spouts and handles where no other part of the vessel was represented within the assemblage. Similarly, body sherds were used conservatively within the vessel count and considered only where the form, fabric or decorative technique could not be identified elsewhere. Sherds were examined macroscopically or with a hand lens.

Although severely abraded examples are rare within the assemblage, small sherds are more common: 14.3% of the fragments (by sherd count) are a maximum of 1g in weight, with 19.3% being no more than 5g.

Information about the excavation project, including stratigraphic details, was taken from Parker Heath (2016a & b) and Malone & Hurford (2016).

3.0 Trench summaries

Descriptions of the ceramics by trench and context are provided below. A table showing the overall date range (supplemented in most instances by explanatory notes) for pottery finds from each context is given in table 1. A full catalogue of the ceramics is presented in appendix 3 and a summary of the assemblage by context in appendix 1. A breakdown of vessel forms by ware type is provided in appendix 2.

Trench 1

A total of 118 pottery sherds (649g in weight) were recovered from trench 1, 56 of which came from topsoil (001), with 54 from subsoil (002). Eight sherds stem from demolition deposit (003) (see appendix 2).

The date range for the material within contexts (001) and (002) is wide, spanning the late 17th to the late 19th centuries, albeit with a greater representation of wares from the latter part of this period. Of the two contexts, (001) contains a greater range of late 17th– to mid/late 18th-century coarsewares, with examples of mottled ware, slipware, yellow ware, blackware and slip-coated ware. Context (002) produced a single sherd that displayed some characteristics of a Cistercian ware of possible late 15th–/16th-century date, although, equally, this could simply be an over-fired blackware.

One small sherd of a white salt-glazed stoneware hollow-ware vessel with rouletted decoration appears amongst the (002) material (Plate 1). The sherd probably dates to the period c.1720-1750, as rouletted designs on white salt-glazed vessels declined in significance during the second half of the 18th century (Barker 1999a).

The 19th-century wares from contexts (001) and (002) are comparable, featuring plain creamwares and under-glaze painted, sponge-decorated and slip-decorated pearlwares, all of which fit comfortably into the date range c.1800-1840. A handful of slip-decorated whiteware bowl sherds, with banded and dendritic ‘mocha’ designs (Plate 2), are somewhat later, as are two undecorated bone china hollow ware fragments from (002).

Coarse earthenwares constitute 46% of all sherds taken from (001), the majority of which represent wide-mouthed, slope-sided pancheons. It is likely that most examples date from the 19th century, although some examples with an orange and white streaked fabric could

be of 17th- or 18th-century date (Ford & Barker 1999). Context (002) features far fewer coarse earthenwares, although those that are present are similar to examples from (001). A small collection of utilitarian brown stonewares from (001) and (002) probably saw contemporaneous use with the coarse earthenwares.

Of the eight sherds recovered from demolition deposit (003), three (single examples of mottled ware, slip-coated ware and blackware) are of late 17th- to mid/late 18th-century date. Four coarse earthenware pancheon fragments are present, at least three of which probably date to the 19th century. A single fragment of an early-mid 19th-century slip-decorated pearlware hollow ware completes the group.

Trench 2

Some 1,517 ceramic vessel sherds (7,453g) were recovered from sixteen trench 2 contexts (see appendix 1). Topsoil (101) and subsoil (110) provided the two largest groups of material, with 635 (41.8% of the total sherds for the context) and 706 (46.5%) fragments respectively. The assemblages from both contexts display a similar profile to those from topsoil and subsoil layers in trench 1, with overall date ranges of the late 17th to late 19th centuries (Plates 3-6) qualified by a preponderance of wares of early-mid 19th-century date. Contexts (101) and (110) each produced large numbers of coarse earthenware sherds, albeit representing a relatively small number of vessels: 322 sherds constituting a minimum of ten vessels from (101) (Plate 7) and 180 fragments deriving from eight vessels from (110).

Utilitarian brown stonewares are also well-represented within (101) and (110), with 46 sherds (representing a minimum of twelve vessels) from the former and 73 sherds (again constituting a minimum of twelve vessels) from the latter (Plate 8).

Of all the trench 2 contexts, (101) and (110) contain the highest concentrations of early-mid 19th-century refined earthenwares. Numerous examples of undecorated creamwares feature in both, with a large number of undecorated pearlware sherds (120 in total) amongst the finds from (110). A handful of decorated creamwares are also present, including an over-glaze bat-printed hollow ware sherd from (101) (Plate 9), probably produced no later than the 1810s (Barker 1999b), and a slip-decorated hollow ware from (110).

Under-glaze painted pearlwares are plentiful in both contexts: (101) produced 26 sherds representing nine vessels and (110) 70 fragments from some 12 vessels. Tea and table wares are the forms of choice, with examples of saucers, tea bowls, a cup plate, bowl and plates. The tea ware forms typically feature mono- or polychrome floral designs (Plate 10), whereas plates have moulded shell-edges highlighted in green or blue (Plate 11). Under-glaze transfer-printed pearlwares are well-represented in (110), alongside slip-decorated examples. The context (101) assemblage also includes 20 sherds of elaborately moulded 'Shining Black' or 'Egyptian ware' (produced c.1830-1860), stemming from a minimum of two teapots and a teapot cover with what appears to be a fire-damaged glaze (probably the result of burning after it was discarded, rather than a firing fault) (Plate 12). Five Shining Black sherds, all from a single teapot, appear in (110).

Examples of c.mid to late 19th-century decorated and undecorated whitewares form a strong component of the (101) assemblage, with fewer numbers from (110). A small number of slip-decorated refined yellow wares appear in (101) and also belong to the second half of the 19th century.

The compositional similarities between the ceramics from (101) and (110) are underscored by at least two cross-joins between the groups.

The pottery from context (103), a probable post-demolition deposit, comprises just fifteen sherds of Shining Black and four fragments of under-glaze painted pearlware, all of which could conceivably have been produced in the second quarter of the 19th century. Context (105), which filled the stepped entrance into the cellar, produced pottery which can be dated to the later 19th century. The small group is dominated by whitewares, either plain or decorated with under-glaze printed or over-glaze lithographic designs (common from the third quarter of the 19th century). Four decorated bone china sherds and two fragments of coloured-glazed ware also feature and, once again, date to the late 19th century.

Pottery from rubble layer (112) has a concentration of material from the first half of the 19th century, notably under-glaze transfer-printed pearlwares, including examples with 'Willow' pattern (Plate 13), supplemented by a few under-glaze painted examples and

undecorated whitewares. A handful of late 17th- to mid-18th-century sherds, including single examples of slipware and mottled ware, are residual in this context.

Trench 3

Trench 3 generated a total of 363 sherds (2,805g) from twelve contexts, a horizon recorded only as 'Topsoil' (probably 201) and one unstratified group (see appendix 1). The single largest collection of ceramics (127 fragments - 34.9% of the total sherd count for trench 3) stems from topsoil (201) and is dominated by coarse earthenwares, at least some of which could be of 17th- or 18th-century date. The context also features a scattering of late 17th- to mid-18th-century types observed elsewhere on site, and a discrete group of 32 mid-late 19th-century under-glaze transfer-printed whiteware sherds. This material includes 20 fragments of at least one plate decorated with 'Asiatic Pheasants' pattern (Plate 14), a well-known design introduced by the Stoke-on-Trent pottery firm of Podmore, Walker & Co. in c.1850 (Goodwin & Barker 2009, 20). Context (201) also includes an under-glaze transfer-printed pearlware bowl fragment that cross-joins with sherds from trench 2 (101) and (110).

A similar ceramic profile is discernible in contexts (202), (205) and (206), albeit with fewer numbers of 19th-century refined earthenwares. Context (206) includes a sherd of a Midlands Purple ware butter pot with a possible quality-control stamp (Plate 15). A Statute of 1662 required potters to stamp butter pots with their name and the weight of the vessel when full; this was superseded in 1692 by a regulation that allowed the mark to be applied directly to the butter (Egan 1992, 97-98).

Contexts (207) and (208) contain only coarse earthenwares, supplemented by a handful of late 17th- to mid-18th-century blackware, mottled ware, Midlands Purple ware and slip-coated ware sherds. Layer (209) again features a majority of 19th-century coarse earthenwares, but with greater quantities of earlier material, including two sherds of a Midlands Purple ware large jar or cistern of possible late 16th-/17th-century date. A handful of undecorated creamwares of early 19th-century date (c.1800-1820) and two sherds of 19th-century brown stoneware also appear in (209).

Compacted clay deposit (210) produced just two coarse earthenware sherds and a brown stoneware bowl fragment, all of 19th-century date, and a small piece of an undiagnostic

creamware vessel, probably of the first quarter of the 19th century. Context (212), into which (210) was embedded, yielded two Midlands Purple butter pot sherds of the 17th to early 18th century, which cross-join with examples from context (209). Seven 17th-century yellow ware sherds are present and form part of a hollow ware vessel, conjoining fragments of which also appear in (209). Four coarse earthenware sherds, at least three of which probably date to the 1800s, complete the (212) group.

Context (224) produced a single sherd of a hollow ware vessel, perhaps a pancheon or bowl, of a hard, pale orange fabric with frequent inclusions of small to medium, well-sorted sub-rounded quartz fragments (Plate 16). It has a reduced greenish-grey glaze on the interior base. The identification of this sherd remains uncertain, but it has some similarities with iron-poor wares, observed in late-medieval/ early post-medieval assemblages from north Warwickshire (Mayes and Scot 1984) and Staffordshire (Rátkai 2004, 12; Goodwin 2014, 56). In Staffordshire, iron-poor wares are known from 13th- to 15th-century groups in the south of the county (Rátkai 2004, 12) and may have persisted into the 16th century in north Staffordshire (Goodwin *forthcoming*).

A single hollow ware sherd from (230) has a hard orange fabric with splashes of brown glaze and is a possible example of late medieval orange ware, essentially a softer-fired version of Midlands Purple (see Ford 1995, 35) (Plate 17). Context (230) was identified as a potential construction deposit for the platform; radiocarbon dating of a charcoal sample recovered from (218) (stratigraphically above 230), returned a date range of c.1295-1410 (95% probability)/ c.1385-1400 (68% probability) (Beta Analytic Inc. 2016). Although comparable fabrics from Chilvers Coton have been placed within the late 14th – 15th centuries, Ford suggests that the earliest appearance of late medieval orange ware/ Midlands Purple in north Staffordshire probably occurred in the late 15th century (Ford 1995, 36). As such, the radiocarbon date from (218) raises questions regarding the identification and dating of the sherd from (230), and further assessment of this fragment would be appropriate.

A single sherd of a late 16th-/ 17th-century Midlands Purple ware large jar or cistern was found in (231), located beneath layer (224). Four further Midlands Purple ware sherds of the same, or at least a similar, vessel were recovered from (232), which was recorded underneath context (231) (Plate 18). Three are base sherds, the undersides of which

display evidence of placing scars, probably for a Cistercian ware cup (Plate 19). The use of large Midlands Purple hollow wares as rudimentary saggars during firing is well known. A small, glazed Cistercian ware would be placed within the kiln on top of the upturned base of an unfired, but leather-hard Midlands Purple cistern or jar, and then covered by another similar vessel (Ford 1995, 14-15; plates 6 & 7). This practice granted refined Cistercian wares some protection from the heat and smoke of the kiln, and created tell-tale scarring, in the form of glaze run-off or kiln furniture marks, on the undersides of some Midlands Purple wares. By the late 17th century Cistercian wares and, subsequently, blackwares were fired within purpose-made saggars rather than large Midlands Purple wares.

Trench 4

The trench produced a small assemblage of 19 sherds (30g), 13 of which were found in topsoil (301) (see appendix 1). The wide, late 17th- to late 19th-century date-range of other topsoil contexts from the site is evident here. In addition, bank make-up layers (304) and (305) provided, respectively, five sherds of an early 19th-century undecorated creamware bowl and a fragment of an 18th-century slip-coated hollow ware.

Table 1: Probable date ranges for ceramics from Under Whittle

Trench	Context No.	Context Description	Full Date Range	Notes
1	001	Topsoil	l C17 – l C19	Preponderance of C19 wares.
	002	Subsoil	l C15 – l C19	Early date due to possible presence of Cistercian ware sherd, although this could be a blackware, pushing the start date into the C17. Otherwise there is a preponderance of e-m C19 material.
	003	Demolition material	l C17 – m C19	
2	101	Topsoil	l C17- l C19	Concentration of e-m C19 wares.
	102	Topsoil	l C17 – l C19	Preponderance of C19 material.
	103	Deposit of ash/ burnt material	e-m C19	Second quarter of the C19?
	104	Subsoil	l C17 – l C19	C19 material is prevalent.
	105	Fill of stepped entrance into cellar	m – l C19	At least some material dates to the last quarter of the C19.
	107	Deposit of ash/ burnt material	e-m C19	
	108	Topsoil	m C19	
	109	Soil within rubble deposit (112)	l C17 – m C18	
	110	Subsoil	C17 – l C19	Concentration of e-m C19 material.
	112	Demolition material	l C17 – m C19	Preponderance of e-m C19 material.
	114	Rubble deposit over stone slabs leading to cellar	l C17 – m C19	
	115	Mortar and rubble layer	l C19	
	116	Clay layer	l C17 – m C18	
	117	Burnt material above surface (118)	l C17 – m C19	
	120	Upper fill of ash pit (119)	e-m C19	
126	Fill within south cellar window opening	C20		
3	201	Topsoil	l C17 – l C19	C19 material prevalent.
	202	Subsoil	l C17 – m C19	Preponderance of e-m C19 sherds.
	205	Layer of clayey silt in centre and S end of trench (E-W earthwork?)	l C17 – l C19	Concentration of C19 material.
3 cont.	206	Layer of silty clay in N	l C17 – m C19	Prevalence of e-m C19 wares.

Stoke-on-Trent Archaeology Service Report

Trench	Context No.	Context Description	Full Date Range	Notes
		end of trench		
	207	Layer of silty clay in NW corner of trench	1 C17 – C19	Context dominated by coarse earthenware sherds, which are C19 or earlier.
	208	Layer of silty clay	1 C17 – C19	Context dominated by coarse earthenware sherds, which are C19 or earlier.
	209	Layer of silty loam (E-W earthwork?)	1 C17 – C19	Context dominated by coarse earthenware sherds, which are C19 or earlier.
	210	Compacted clay, within (212)	C19	A creamware sherd could suggest an e C19 date.
	212	Layer of silty clay	C17 – C19	
	224	Layer of clay (with silty lenses) at S end of trench	C16?	Date derives from one possible iron-poor ware sherd.
	230	Silty clay layer: possible construction deposit for platform	1 C15 – C17	Date derives from a single late medieval orange ware sherd.
	231		1 C16 – C17	Date derives from a single Midlands Purple ware sherd.
	232	Silty clay deposit below (224)	1 C16 – C17	The context generated only Midlands Purple sherds.
4	301	Topsoil	1 C17 – 1 C19	
	304	Layer of silty loam (bank make-up)	e C19	Context produced five sherds, all of which relate to a single undecorated creamware bowl of e C19 date.
	305	Layer of clay (bank make-up)	C18	Date derives from a single slip-coated hollow ware sherd.

4.0 Discussion

The pottery from Under Whitle is indicative of activity on/ occupation of the site from at least the late 16th/ 17th century until the late 19th/ early 20th century, although the ceramic record is inconsistent across this period. The late 16th- to mid/late 18th century is reasonably well populated with a standard repertoire of coarsewares, whereas evidence of the refined tea and table wares that were in common use from the 1720s onwards is poor, limited to a white salt-glazed stoneware sherd from trench 1 (002) and, potentially, a bat-printed creamware from trench 2 (101) (although this could be early 19th century). A more complete picture of ceramic consumption is discernible for the first half of the 19th century, with multiple examples of plain and decorated pearlwares and, to a lesser degree, whitewares, in forms such as bowls, tea bowls, saucers, cups and plates. Other decorative tea and tablewares also belong to this period, including elaborately moulded Shining Black teapots and at least one bowl. A terminal decline in the use of ceramics on site appears to commence in the later 19th century, concluding in the first half of the 20th century. Coarse earthenwares and stonewares maintain a constant presence throughout the 18th and 19th centuries (and perhaps earlier), although precisely dating at least some of this material is difficult.

A minimum of 294 vessels feature within the assemblage (determined using the methodology outlined above in section 2.0) (see appendix 2). A minimum of 208 vessels (70.8% of the total number of forms) were found in trench 2, with 51 (17.3%) from trench 3, 27 (9.2%) from trench 1, and eight (2.7%) from trench 4. A balance between coarse and refined forms is evident within the trench 1 and 4 groups. The trench 2 forms are weighted towards tea, table and toilet wares in refined fabrics, with 62% of vessels belonging to this group. In contrast, the trench 3 material demonstrates a bias towards coarseware forms, which constitute 69% of vessels discernible within the group. This is interesting, as cross-joins between the trench 2 and 3 groups, coupled with compositional similarities in terms of ware types, hint at a common source for at least some of the material, probably one or more rubbish dumps related to the occupation of the site, the contents of which have been disturbed and redeposited. The respective form weightings of the trench 2 and 3 assemblages could qualify this interpretation, suggesting some functional distribution of pottery on site. At present there is insufficient evidence to progress this theory, although it can at least be said that the area of the former farmhouse

site and platform clearly (and somewhat unsurprisingly) constitute the focus of ceramic use at Under Whittle during the post-medieval period.

Regardless of any significance that might be derived from the spatial distribution of the excavated ceramics, the finds provide some evidence of the types of activities that were undertaken on site. The presence of coarse earthenware pans, for example, suggests dairying and it is likely that other utilitarian forms recovered from the site were also utilised in milk collection and processing. It is not clear if this activity was carried out for subsistence or trade. A small number of 17th-century butter pots were recovered from the site, but too few to conclude whether the occupants of Under Whittle were producers of dairy goods or merely consumers during this period.

The 19th-century material shows a division between utilitarian vessels employed for the production and preparation of food, and refined forms associated with formal dining and the consumption of beverages such as tea and coffee. Of the refined earthenware vessels from the site, 55 are plain, compared with 102 that feature some form of applied or moulded decoration. Although price differentials narrowed as the century progressed, potters' price fixing lists show that throughout the 1800s plain earthenwares were consistently cheaper than decorated examples (Miller 1991). Printed wares generally commanded the highest prices: in 1814, for example, printed 10-inch earthenware dishes were 4.8 times more expensive than their undecorated equivalents, although those with Willow pattern were only 3.6 times more costly, due to the popularity and consequent ubiquity of the design (Miller 1991 8, 13-14). At Under Whittle, under-glaze transfer-printed designs feature on 32 earthenware vessels (19 pearlwares, eleven whitewares and two forms that could be pearlwares or whitewares), only two of which (both pearlware plates) are decorated with Willow pattern. The only decorative technique that is more prevalent is under-glaze painting, which appears on 35 vessels (two creamwares, 27 pearlwares, three whitewares and three examples that could be pearlwares or whitewares).

Nineteenth-century price fixing lists record that bone china vessels, even plain examples, were more expensive than printed earthenwares. In 1836, an undecorated 6-inch bone china 'muffin' (a small plate of between 3 and 7 inches in diameter) was 7.14 times more expensive than a plain earthenware example; a transfer-printed earthenware muffin of the

same size was just three times more expensive (Miller 1991, 14-15). Although bone china prices decreased over time, their cost remained above that of decorated earthenwares. The Under Whitle assemblage contains only ten bone china vessels of probable mid or mid-late 19th-century date, but these include plain and transfer-printed examples, embellished with over-glaze painted or gilded detail, the addition of which would have increased their cost (Barker 2005, 8).

Evidence for the use of decorated tea, table or toilet ware sets at Under Whitle is limited to a tea bowl and one or more saucers from trench 2 (110) and (101), which feature the same polychrome under-glaze painted floral design. It is possible, however, that additional examples might exist within the assemblage, as the somewhat fragmentary nature of the material hindered the identification of matching patterns.

It is unlikely that the printed and at least some of the painted wares saw use on a daily basis, but were instead reserved for special occasions, such as entertaining guests. The more expensive decorated wares could also have been displayed around the house, which was a common practice in even the poorest homes. Under Whitle's 'everyday' ceramics would have included undecorated plates, which, whilst unfussy, would still have allowed formal dining when necessary. Plain or cheap slip-decorated bowls would have served a variety of functions, from food preparation to the consumption of foodstuffs such as stews and soups.

None of the vessels within the assemblage show signs of repair. Once broken or otherwise considered redundant, vessels appear to have simply been discarded. The 19th-century residents of Under Whitle were, therefore, able to indulge a preference for fashionable, decorative ceramics that, in turn, allowed them to observe some of the conventions of respectable society. Although often associated with the middle-classes, a reduction in the cost of mass-produced ceramics during the 19th century increasingly placed even the more expensive decorated wares within the reach of poorer households, keen to partake in a growing culture of material acquisition. As such, excavated assemblages of 18th- and 19th-century date from the UK and overseas, often contain greater quantities of decorated wares than might be expected from the documented or anticipated economic status of the site. For example, an excavated mid-19th-century clearance deposit from a small tenant farm at Berryhill, Stoke-on-Trent, contained

roughly equal quantities of printed earthenwares, cheaper decorated ceramics with sponged, slip-decorated or painted designs, and plain wares (Boothroyd 2009, 47). The group also contained a small number of bone china teawares, some of which featured over-glaze decoration. A similar trend has also been observed within 19th-century urban assemblages from Stoke-on-Trent (e.g. Barker 2006; Goodwin 2008) and elsewhere in Britain (e.g. Goodwin 2009). Further afield, Barker identified unexpectedly high numbers of printed earthenwares in 19th-century blackhouse assemblages from the Isle of Barra in the Outer Hebrides (Barker 2005). At Dolly's Creek, a mid-19th-century gold mining settlement 60km east of Melbourne, Australia, a total of 40 different printed patterns, including common designs such as Willow and Asiatic Pheasants, were identified on tea and tablewares (Lawrence 2000, 131). The appearance of any ceramics at Dolly's Creek was unexpected, as documentary evidence suggested that tin vessels were invariably used by the miners and their families. Decorated earthenwares, whilst somewhat impractical in the circumstances, were valued as symbols of respectable society, demonstrable membership of which was important to those living on its margins (Lawrence 2000, 134). Determining status from ceramic assemblages of the period, therefore, is by no means straightforward, as the consumer choices evident within such groups are complex and influenced by a myriad of economic, social, ideological and personal factors.

The ceramic assemblage offers few definite clues to the individuals or groups that occupied or worked at the site. A late 19th-century hollow ware vessel decorated with a possible lithographic nursery print from trench 2 (110) 1444, could attest to children at Under Whitle. Further evidence may be provided by four hand-rolled earthenware marbles from trench 2 (101) 1158, (105) 1254, (110) 1458 and (114) 1258. Dairying (butter and cheese production) was an activity typically undertaken by women (Boothroyd 2009, 85; Yentsch 1991) and, as such, the milk pans found at Under Whitle may be indicative a female occupants or, at the very least, workers. In addition, research into middle-class households of the late 18th and early 19th centuries, has linked women with domesticity and its associated material culture, including refined kitchen, table and tea wares (e.g. Wall 1994). A similar link between women and the observance of domestic respectability through ceramics and household ornamentation has been made in relation to the settlement at Dolly's Creek (Lawrence 2000, 134). The tea and table wares from Under Whitle could, therefore, be regarded as evidence of gender divisions within

the household, although, as Casella and Croucher have cautioned, the complexities and nuances of domestic life preclude simple attempts to link intrinsically such material to women alone (Casella & Croucher 2010, 49). Finally, in addition to their role as everyday wares, could the undecorated 19th-century ceramics denote the presence of servants at Under Whitle? Differences between the material culture of servants and their employers within 19th- and 20th-century households is to be expected, although not always obvious in archaeological assemblages of mass-produced goods (Boothroyd 2009, 83). In this instance, it is tempting to link decorated wares with the resident family at Under Whitle and place the plain ceramics within the sphere of their servants, but even if the presence of the latter can be established, the dynamics of ceramic consumption on site are unlikely to be so straightforward.

Close geographical proximity to the pottery industries of Stoke-on-Trent and Derbyshire no doubt facilitated the acquisition of ceramics at Under Whitle, although, as Barker has illustrated, the development of trade and transport networks during the late 18th and 19th centuries improved the supply of wares even to geographically remote communities (Barker 2005). Precisely how the occupants of Under Whitle obtained their pots is unclear, although at least some were probably purchased from nearby market towns, the closest of which is Longnor.

Although north Staffordshire is the obvious source for the majority of the later refined wares, determining the origin of such material is difficult, particularly as none of the sherds feature a legible manufacturer's mark. By the end of the 18th century, Staffordshire-type wares effectively formed the industry standard and were emulated by manufacturers throughout Britain (Barker 2001, 78). The plain and slip-decorated refined yellow wares may well be products of the south Derbyshire ceramics industry, which distributed its goods throughout the Midlands and beyond during the 19th century (Barker 2011, 18). It is likely that many of the brown stonewares from Under Whitle also stem from Derbyshire, which had a flourishing stoneware industry in centres such as Alfreton, Denby, Belper, Chesterfield and Church Gresley, throughout the 19th century (Brown 1982, 20).

Stoke-on-Trent is also a possible source for the 16th-/ 17th-century wares from the site. Evidence for late 15th-/ 16th-century production of Midlands Purple and Cistercian wares

has been recovered from the Market Place (Boothroyd & Courtney 2007) and School of Art (Goodwin forthcoming), Burslem, Stoke-on-Trent. Archaeological evidence for the manufacture of mottled wares, blackwares, slipwares, yellow wares and other common coarsewares of the 17th and early 18th centuries is plentiful from Burslem and other parts of the Potteries, and, by the late 1600s, these wares were being distributed throughout England and exported to overseas colonies in North America and the Caribbean (Barker 2001, 74-75).

Ticknall, Derbyshire represents an equally likely point of origin for the early material. Pottery production in Ticknall commenced in the late 15th century and persisted until the 1880s. Ticknall's potters were prolific, with a repertoire that included Midlands Purple wares (including butter pots), Cistercian wares, blackwares, yellow wares and slipwares. The industry distributed its wares across a wide area, spanning the Midlands and reaching into Lancashire to the north and Oxfordshire in the south (Spavold & Brown 2005, 122). As such, Ticknall was an early rival to north Staffordshire and the two areas maintained comparable ceramic industries until c.1630, by which time Stoke-on-Trent had become the more important production centre (Spavold & Brown 2005, 85). The possibility that Ticknall products feature within the Under Whittle assemblage is heightened by references to the sale of Ticknall wares at Leek and Bakewell markets during the 17th and (in the case of the latter) early 18th centuries (Spavold & Brown 2005, 128-131). Both market sites are situated within a 10 mile radius of Under Whittle.

5.0 Conclusions

The Under Whittle ceramic assemblage comprises a range of standard wares produced in Staffordshire and Derbyshire during the late 16th to the late 19th centuries. Its components describe a period of considerable change in the manufacture of ceramics, which saw the introduction of new ware types and forms manufactured for mass consumption on a global scale. By the early 19th-century, the occupants of Under Whittle were able to acquire ceramics that were both fashionable and symbolic of the norms of respectable society. In acquiring these ceramics the residents of Under Whittle were following wider trends of ceramic consumption that were rooted in the rise of consumerism.

Aspects of the assemblage and questions generated by its assessment would benefit from further study:

- The provenance of the 16th- and 17th-century material requires clarification. Close comparison between the Under Whittle material of this period and known pieces from Ticknall and Stoke-on-Trent would be profitable.
- The discovery of ceramics of late medieval/ early post-medieval date (notably sherds from contexts 224 and 230) from trench 3 highlights the potential for further investigation of the potential house platform.
- Is there a common source for the ceramics from trenches 2 and 3? The identification of further pottery-rich refuse deposits on site would be of considerable value in profiling ceramic consumption on site and contribute to the relatively small corpus of post-medieval pottery assemblages from the UK.
- A study of local markets and their possible links with Under Whittle could help establish what opportunities were available to the residents of the site to purchase ceramics.

6.0 Acknowledgements

This report was written by Jonathan Goodwin of Stoke-on-Trent Archaeology Service. Valuable assistance was provided by Dr Catherine and Dr Ian Parker Heath, directors of the *Peeling Back the Layers* community archaeology project. Thanks are also due to Elspeth Walker and to Miranda Goodby, Curator of Ceramics at The Potteries Museum & Art Gallery, Stoke-on-Trent.

7.0 References

Barker, D. 1999a. *White Salt-Glazed Stoneware and Variants*. Unpublished Historic England training handout.

Barker, D. 1999b. *Creamware*. Unpublished Historic England training handout.

Barker, D. 2001. ‘“The Usual Classes of Useful Articles”’: Staffordshire Ceramics Reconsidered’, *Ceramics in America* 1, 72-93.

Barker, D. 2005. ‘Pottery usage in a crofting community: an overview’, in Branigan, K., *From Clan to Clearance – History and Archaeology on the Isle of Barra c.850-1850*. Oxford: Oxbow

Barker, D. 2006. ‘Ceramic finds’ in Goodwin, J., Nicholls, A., Sutherland, Z. & Weston, T. *Archaeological Evaluation at Upper Huntbach Street, Hanley, Stoke-on-Trent, Staffordshire NGR SJ 88666 47866*. Stoke-on-Trent Archaeology Report No. 185.

Barker, D. 2011. ‘Ceramic finds’ in Cramp, R. & Goodwin, J. *Archaeological Investigations at Sharpe’s Pottery Heritage & Art Centre, Swadlincote, Derbyshire NGR SK 2983 1954*. Stoke-on-Trent Archaeology Report No. 324.

Beta Analytic Inc. 2016. *Report on Radiocarbon Dating Analyses UW16 218*.

Boothroyd, N. & Courtney, P. 2007. ‘Late medieval/ early modern pottery from Burslem Market Place, Stoke-on-Trent’, *Medieval Ceramics* 28, 74-98.

Boothroyd, N. 2009. ‘A small liberty.... of scattered farm-houses and collieries’. *Excavations at Cotehouse Farm and Lawn Farm, Berryhill, Stoke-on-Trent, Staffordshire, 2003-2007*. Stoke-on-Trent Archaeology Service Monograph 3.

Brown, R. B. 1982. ‘Derbyshire and Nottinghamshire salt-glazed stonewares’ in Lockett, T. A. & Halfpenny P. A. (ed.) *Stonewares & Stone chinaware of Northern England to 1851*, 19-22. City Museum & Art Gallery, Stoke-on-Trent.

Casella, E. C. & Croucher, S. K. 2010. *The Alderley Sandhills Project: An archaeology of community life in (post)-industrial England*. Manchester: Manchester University Press.

Egan, G. 1992. 'Marks on butterpots' in Gaimster, D. & Redknap, M. (ed.) *Everyday and Exotic Pottery from Europe: Studies in honour of John G. Hurst*. Oxford: Oxbow Books, 97-100

Ford, D. 1995. *Medieval Pottery in Staffordshire, AD800-1600: A Review*. Staffordshire Archaeological Studies 7. City Museum & Art Gallery, Stoke-on-Trent

Ford, D. & Barker, D. 1999. *Coarse Earthenware*. Unpublished Historic England training handout.

Goodwin, J. 2009. *Ceramic finds from Dean Street multi-storey car park, Bangor*. Stoke-on-Trent Archaeology Report No. 249.

Goodwin, J. & Barker, D. 2009. *Small Pieces of History: Archaeological Ceramics from Tunstall, Stoke-on-Trent*. Stoke-on-Trent Archaeology Service Monograph 2.

Goodwin, J. 2014. 'The Pottery' in Dodd, A. *et al* 'Excavations at Tipping Street, Stafford, 2009-10, *Staffordshire Archaeological & Historical Society Transactions* XLVII, 44-60.

Goodwin, J. forthcoming. *Excavations at Burslem School of Art, Stoke-on-Trent*. Stoke-on-Trent Archaeology.

Lawrence, S. 2000. *Dolly's Creek: An Archaeology of a Victorian Goldfields Community*. Victoria: Melbourne University Press.

Malone, S. & Hurford, M. 2016. *Under Whitle Farm, Sheen, Staffordshire: report on the excavation of trench 2*. Trent & Peak Archaeology Report No. 077/2016

Mayes, P. & Scott, K. 1984. *Pottery Kilns at Chilvers Coton, Nuneaton*. Society for Medieval Archaeology Monograph 10. London.

Miller, G. L. 1991. 'A Revised Set of CC Index Values for Classification and Economic Scaling of English Ceramics from 1787 to 1880', *Historical Archaeology* 25, 1-25.

Parker Heath, I. 2016a. *A report on the excavations from 20th June to 9th July 2016 on behalf of the Tudor Farming Interpretation Group for Peeling Back the Layers Community Archaeology Project.*

Parker Heath, I. 2016b. *A report on the excavations of the extension to Trench 3 from 7th September to 16th September 2016 on behalf of the Tudor Farming Interpretation Group for Peeling Back the Layers Community Archaeology Project.*

Rátkai, S. 2004. 'The medieval and post-medieval pottery' in Ciaraldi, M., Cuttler, R., Dingwall, L. and Dyer, C., 'Medieval Tanning and Retting at Brewood, Staffordshire: Archaeological Excavations 1999-2000', *Staffordshire Archaeological & Historical Society Transactions* 40, 12-18

Spavold, J. & Brown, S. 2005. *Ticknall Pots & Potters from the late fifteenth century to 1888*. Derbyshire: Landmark Collector's Library.

Wall, D. D. 1994. *The Archaeology of Gender: Separating the Spheres in Urban America*. New York: Plenum Press.

Yentsch, A. 1991. 'Engendering Visible and Invisible Ceramic Artifacts, Especially Dairy Vessels', *Historical Archaeology* 25, no. 4, 132-155.



PLATE 1

Early/ mid 18th-century white salt-glazed stoneware sherd with rouletted decoration from Trench 1 (002).



PLATE 2

Slip-decorated mid 19th-century whiteware bowl sherd with dendritic 'mocha' design from Trench 1 (002) (left). A more complete example with similar decoration excavated in Tunstall, Stoke-on-Trent (right) (see Goodwin & Barker 2009, 54, Fig. 174).

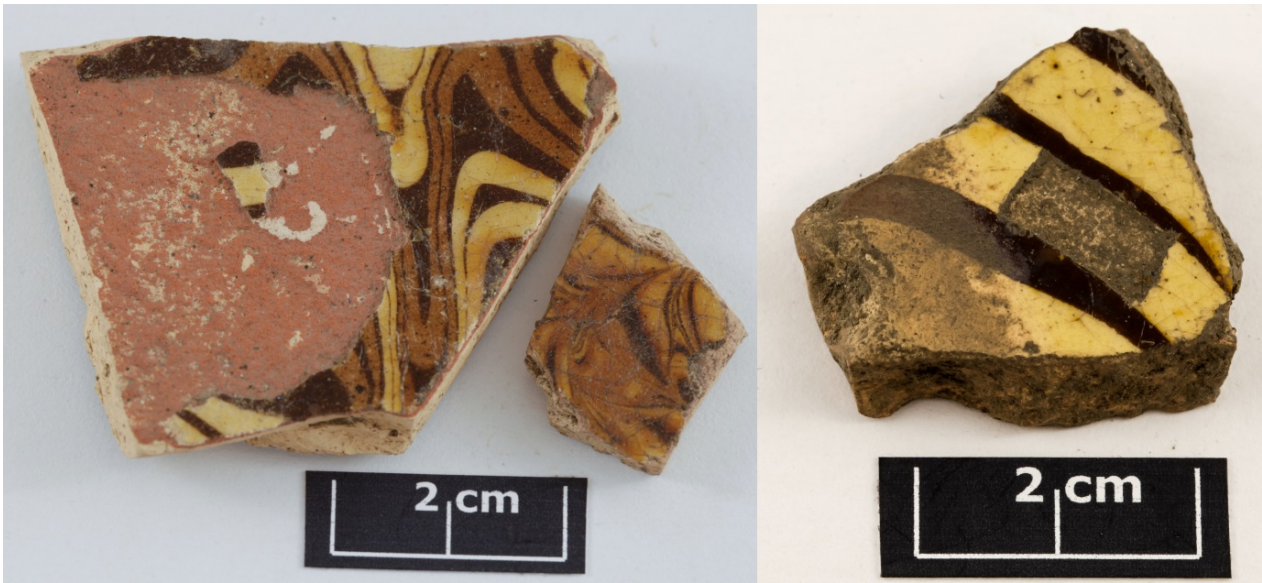


PLATE 3

Trailed slipwares of late 17th-/ early-18th-century date from Trench 2 (101) (left) and (110) (right).



PLATE 4

Seventeenth-century yellow wares from Trench 2 (110).



PLATE 5

Late 17th-/ early 18th-century mottled wares from Trench 2 (110).

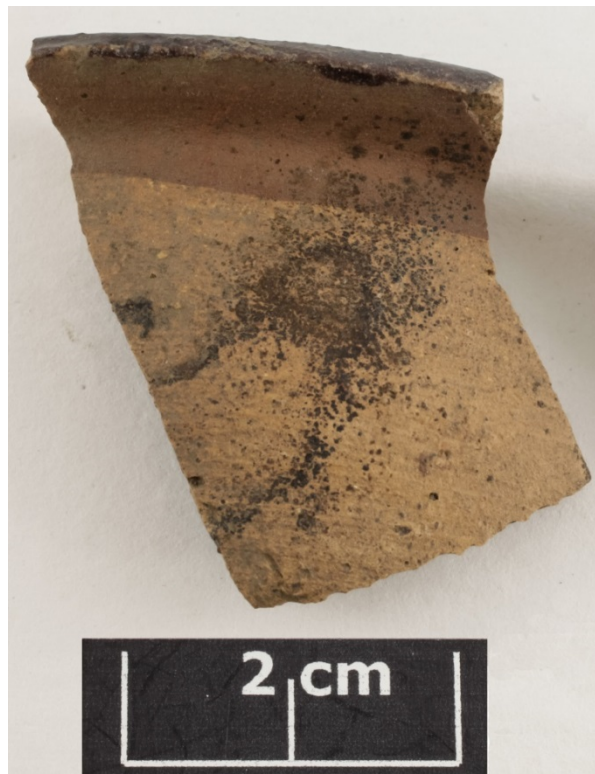


PLATE 6

Exterior view of an 18th-century slip-coated ware bowl from Trench 2 (110). A band of red, iron-rich slip, applied over the buff-coloured body and under the lead glaze, can be seen below the rim.



PLATE 7

Nineteenth-century coarse earthenware pancheon rim/body sherd from Trench 2 (101).



PLATE 8

Nineteenth-century brown stonewares with moulded and rouletted decoration from Trench 2 (101).



PLATE 9

Late 18th-/ early 19th-century creamware sherd from Trench 2 (101) with over-glaze bat-printed design.



PLATE 10

A collection of early/ mid-19th-century under-glaze painted pearlwares from Trench 2 (110).



PLATE 11

'Shell-edged' pearlware plate rim sherds of early-mid-19th-century date from Trench 2 (110).



PLATE 12

Mid-19th-century 'Shining Black' or 'Egyptian ware' teapot and teapot cover sherds from Trench 2 (101). The example in the bottom left-hand corner of the image has been damaged by fire, probably following disposal.



PLATE 13

(Left) early-mid-19th-century under-glaze transfer-printed pearlware plate sherd with 'Willow' pattern from Trench 2 (112). (Right) a more complete 'example excavated from Tunstall, Stoke-on-Trent (Goodwin & Barker 2009, 24, Fig. 59).

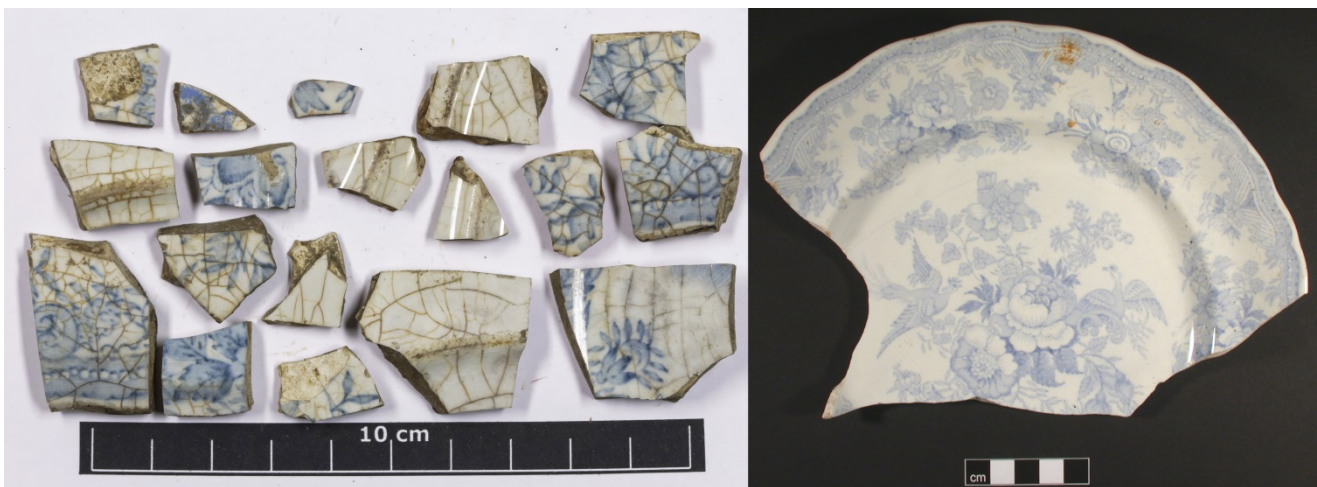


PLATE 14

(Left) mid-late 19th-century under-glaze transfer-printed whiteware plate sherds with 'Asiatic Pheasants' pattern from Trench 3 (201). (Right) a more complete example excavated from Tunstall, Stoke-on-Trent (Goodwin & Barker 2009, 41, Fig. 109).

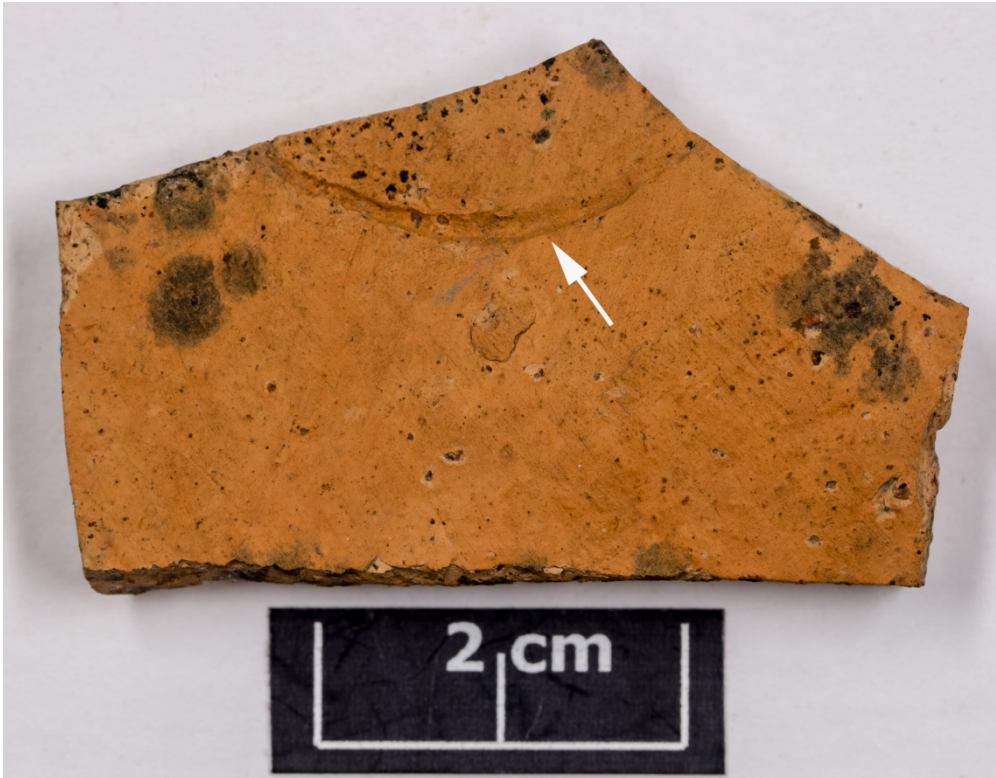


PLATE 15

Late 17th-century Midlands Purple ware butter pot from Trench 3 (206), with possible remnant of an impressed quality-control stamp.



PLATE 16

Possible late medieval/ early post-medieval earthenware sherd from Trench 3 (224), with underside of the vessel to the left and reduced interior to the right.



PLATE 17

Possible late-medieval orange ware sherd from Trench 3 (230).



PLATE 18

Late 16th-/ 17th-century Midlands Purple ware cistern/ large jar rim sherd from Trench 3 (232).



PLATE 19

Underside of a Midlands Purple ware cistern/ large jar base sherd from Trench 3 (232), showing firing scar, probably from a Cistercian ware vessel.

Appendix 3: Catalogue of ceramic finds from Under Whittle (cross-joining sherds are colour coded). A key to ware/ fabric types, decoration and colours is provided at the end of the catalogue.

Trench	context	Finds no	ware/fabric description	app. surface dec	dec in/on body	no. glzd	vessel form/ description	Component parts						tot. no. shds	wt. (g)	MNV	date	notes
								no. base	no. body	no. rim/edge	no. spout	no. handle	no. profile					
1	001	1	CEW			1	pancheon			1				1	32	1	C19	White slip coat on interior.
1	001	2	CEW			1	pancheon		1					1	14		C18?	Orange fabric with red and white streaks.
1	001	3, 4	CEW			2	pancheon			1				2	10		C19	Cross joins with 1 (001) 62.
1	001	6	PW	UGSpD (B)		2	saucer			2				2	4	1	e-mC19	Blue paint applied to interior rim using an uncut sponge. May well represent prt of vessel recorded in 1 (002) 107 and 108.
1	001	7	SLDWW	slip banding on exterior?		1	bowl (carinated)		1					1	1		m-IC19	
1	001	8	WW			1	?							1	1		m-IC19?	
1	001	9	SLCW		turned line	1	hollow ware		1					1	1		C18	Buff fabric with iron-rich slip coat beneath dark glaze.
1	001	12a	PW			1	cup			1				1	1	1	e-mC19	
1	001	12b	PW			1	plate	1						1	4	1	e-mC19	
1	001	13-15	PW			3	hollow ware?		3					3	1		e-mC19	
1	001	17	CEW				pancheon		1					1	10		C19	
1	001	18	CEW			1	pancheon	1						1	34		C19	
1	001	19	CEW				pancheon			1				1	14	1	C19	Pinkish-buff fabric over which has been applied an iron rich slip coat.
1	001	20	CEW			1	pancheon	1						1	34		C19	
1	001	21	BStW			1	pancheon/ dish			1				1	12	1	C19	Derbyshire stoneware.
1	001	22	CEW			1	jar	1						1	36		C19	
1	001	22	BStW			1	hollow ware		1					1	6		C19	Derbyshire stoneware.
1	001	23	SLCW			2	hollow ware		2					2	1		C18	Buff fabric, with iron-rich slip coat beneath dark glaze.
1	001	24	SLCW			1	hollow ware		1					1	1		C18	Buff/ pink fabric with iron-rich slip coat beneath dark glaze.
1	001	25	CEW			1	pancheon	1						1	20		C19?	Dense fabric, streaky brown glaze on interior base.
1	001	27	CEW			1	pancheon		1					1	1		C19	
1	001	28	SLDPW	banding; wormed slip design		1	bowl			1				1	4	1	mC19	Black slip banding below rim, traces of wormed design.
1	001	29	SLDPW	wormed slip design		1	hollow ware		1					1	1		mC19	

			description	dec	body	glzd	description	no. base	no. body	no. rim/edge	no. spout	no. handle	no. profile	no. shds					
1	001	30	CrW			1	hollow ware?		1					1	1			eC19	
1	001	31	SLDPW	slip ground on exterior		1	hollow ware		1					1	1			C19	Orange slip ground on exterior.
1	001	35	CEW			1	pancheon		1					1	18			C19	
1	001	39	BW			1	hollow ware		1					1	1	1		IC17-mC18	
1	001	41	CEW			1	pancheon		1					1	6			C19	
1	001	42	CEW			1	pancheon		1					1	4			C19	
1	001	43	CEW				pancheon?	1						1	1			C19	
1	001	44	MW			1	hollow ware		1					1	1	1		IC17-mC18	
1	001	45	YW			1	hollow ware?							1	1	1		C17?	Tiny fragment - could be a slipware.
1	001	46	CEW			1	pancheon	1						1	12			C19	
1	001	47	SLW	trailed slip		1	dish	1						1	4	1		IC17-eC18	White slip trailed over interior.
1	001	55	CEW				pancheon		1					1	12			C19	
1	001	56	PW			1	tea bowl	1						1	1	1		eC19	
1	001	57	CEW			2	pancheon	1	1					2	40			C19	
1	001	58	BStW			2	hollow ware		2					2	4			C19	Derbyshire stoneware.
1	001	59	SLCW			1	hollow ware		1					1	1			C18	Buff/ pink fabric.
1	001	60	BW			1	hollow ware		1					1	1			IC17-mC18	
1	001	61	CEW				pancheon?		1					1	6			C19	
1	001	62	CEW			1	pancheon			1				1	4	1		C19	Cross joins with 1 (001) 3/4.
1	001	63	SLCW		turned line	1	cup/ mug		1					1	1	1		C18	Buff fabric with iron-rich slip coat beneath dark glaze.
1	001	64	CEW			1	?							1	1			C19?	
1	001	65	SLCW			1	hollow ware		1					1	1			C18	Buff/ pink fabric.
1	001	75	CEW			2	?							4	2			C19?	
1	002	10	WW			1	bowl	1						1	32	1		m-IC19	
1	002	51	CEW			1	pancheon		1					1	18			C19	
1	002	66	SLDPW	wormed slip design		2	bowl		2					2	1			mC19	Blue, white and black wormed design over orange slip ground.
1	002	67	BStW		turned lines above base	2	hollow ware		2					2	22			C19	Derbyshire stoneware.

			description	dec	body	glzd	description	no. base	no. body	no. rim/edge	no. spout	no. handle	no. profile	no. shds				
1	002	70	WSGSW		turned and rouletted/ moulded decoration	1	hollow ware		1					1	1	1	mC18	Rouletted decoration is uncommon after mid C18.
1	002	71	MW			1	hollow ware		1					1	5		IC17- mC18	
1	002	77	BStW			3	jar/ bowl		2	1				3	16	1	C19	Derbyshire stoneware.
1	002	78	BC			2	hollow ware		2					2	1	1	m-IC19	
1	002	81	SLCW			1	hollow ware		1					1	2		C18	Buff fabric with iron-rich slip coat beneath dark glaze.
1	002	91	CrW			1	hollow ware		1					1	1	1	eC19	
1	002	93	CistW/ BW			1	hollow ware		1					1	4	1	IC15-C17?	Hard-fired purple fabric with black glaze on vessel interior and exterior. This could be an over-fired blackware or possibly a Cistercian ware.
1	002	95	SLCW			1	hollow ware		1					1	1		C18	Buff fabric with iron-rich slip coat beneath dark glaze.
1	002	98	PW	UGP (Poly)		1	saucer	1						2	2	1	e-mC19	Floral design in blue and green, similar to examples from 2 (110) 1011. Pre-c.1830.
1	002	99	CEW			1	pancheon		1					1	12		C19	
1	002	100	CEW			2	pancheon	1	1					2	20		C19	
1	002	101	CrW			1	hollow ware		1					1	1		eC19	
1	002	103	BStW		turned lines below rim	4	jar/ bowl		2	2				4	16	1	C19	
1	002	104	SLDPW	wormed slip design; banding		9	bowl		5	4				9	8	1	mC19	White, blue and black wormed design applied over orange slip ground. Black banding below rim.
1	002	104	CrW			1	?							1	1		eC19	
1	002	105	SLDWW	mocha design; banding		3	bowl		3					3	2	1	m-IC19	Black mocha design over orange slip ground.
1	002	106	CEW			1	pancheon		1					1	12		C18?	Pale orange fabric with occasional red and white streaks.

			description	dec	body	glzd	description	no. base	no. body	no. rim/edge	no. spout	no. handle	no. profile	no. shds				
1	002	107	PW	UGSpD (B)		2	saucer			2				2	2	1	e-mC19	Blue paint applied to interior rim using an uncut sponge. Two rims of differing thickness - one probably belongs to same saucer that is recorded in 1 (001) 6 and (002) 108, the other may well be a separate vessel.
1	002	108	PW	UGSpD & P (Poly)		3	saucer	1	2					3	10	1	e-mC19	Blue paint applied to interior rim using an uncut sponge. Painted (floral?) design in green and black on interior base. May well form part of vessel recorded in 1 (001) 6 and 2 (002) 107.
1	002	109	CEW			1	pancheon		1					1	28		C18/ C19?	Hard-fired orange/ red fabric.
1	002	110	SLDPW	slip banding	rouletted decoration below rim	1	bowl			1				1	8	1	e-mC19	Rouletted decoration with copper-green wash bordered by black slip bands.
1	002	110	CrW			2	hollow ware		2					2	8		eC19	
1	002	111	SLDPW	wormed slip design; banding		4	bowl (carinated)		4					4	6		mC19	Blue, white and black wormed design over orange slip ground. Black banding around lower body.
1	003	86	SLCW			1	hollow ware		1					1	1		C18	Buff fabric with iron-rich slip coat beneath dark glaze.
1	003	87	SLDPW?	slip coat, turned lines		1	hollow ware		1					1	1		e-mC19?	Black slip coat with lines turned through to body.
1	003	113	MW			1	hollow ware	1						1	1		IC17-mC18	Orange fabric with white slip coat beneath glaze.
1	003	114	BW			1	hollow ware		1					1	1		IC17-mC18	
1	003	115	CEW			2	pancheon		2					2	10		C19	
1	003	116	CEW			1	pancheon		1					1	24		C19	
1	003	121	CEW				pancheon		1					1	4		C19?	
2	101	BF1001	CEW			132	pancheon	8	283	12				303	1619	6	C19?	
2	101	BF1001	CEW			1	jar/ bowl	1	1					2	4	1	C19?	Possible iron-rich slip coat under glaze on body sherd.
2	101	1001	BStW			2	ink jar		2					2	10	1	C19	
2	101	1002	CEW			3	jar	1	2					3	20	1	C18/C19	Straight-sided jar, dense orange/ red fabric.
2	101	1002	CEW				pancheon/ jar		1					1	20	1	C18?	Pale orange fabric with occasional red and white streaks.
2	101	1002	CrW	UGP		6	bowl	6						6	18	1	IC18/eC19?	UGP design on interior. Cross-joins with base sherd recorded as 2 101 1004/1.

			description	dec	body	glzd	description	no. base	no. body	no. rim/edge	no. spout	no. handle	no. profile	no. shds				
2	101	1002	CrW			12	bowl	9	3					12	52		eC19	Cross joins with bowl base sherd recorded as 2 101 1002/2.
2	101	1002	PW	UGP		5	saucer	5						5	26	1	eC19	Polychrome UGP saucer with floral design; pre-1830.
2	101	1002	PW	UGP		4	saucer	4						4	6	1	cC19	Polychrome UGP saucer with floral design; pre-1830.
2	101	1002	PW	UGP		1	bowl		1					1	4		e-mC19	Blue monochrome(?) UGP design.
2	101	1002	PW			1	hollow ware		1					1	1		e-mC19	
2	101	1002	CrW			2	hollow ware	2						2	1		e-mC19?	
2	101	1003	SLDYW	Wormed' slip		10	bowl (carinated)	3	6	1				10	42	1	m-IC19	White, blue and brown slip in 'wormed/' 'cabled' design.
2	101	1003	RefYW			1	chamber pot?			1				1	1	1	C19	Probably from a slip-decorated vessel.
2	101	1003	SLDYW	Joggled slip		1	hollow ware		1					1	6		m-IC19	Black, white and blue slip in joggled design.
2	101	1003	WW	UGTP (Bk)		5	plate	5						5	12	1	m-IC19	Unknown print with acorn and leaf border.
2	101	1004	DptSGSW			3	bowl		1	2				3	10	1	eC18	White engobe, rim dipped in iron wash. Probably c.1710-1760 in date.
2	101	1004	CrW			6	plate	3	3					6	46		eC19	
2	101	1004	CrW			1	bowl	1						1	8	1	eC19	Bowl with straight footring. Cross joins with 2 101 1002/2
2	101	1004	CrW	UGP		1	bowl	1						1	1		IC18/eC19?	Cross joins with UGP bowl recorded as 2 101 1002/1.
2	101	1004	CrW/ PW?			15	flatware?		15					10	10		mC19?	
2	101	1004	SLDWW	slip bands on exterior		1	mug			1				1	6	1	m-IC19	Cross-joins with 1091/1.
2	101	1004	SLDPW/ WW?	slip bands on exterior		1	bowl			1				1	1	1	m-IC19	Black and blue bands of slip.
2	101	1004	WW			1	hollow ware	1						1	1		m-IC19	
2	101	1004	Buff StW			1	jar		1					1	18	1	C19	
2	101	1005	CrW			1	plate	4						4	2		eC19	
2	101	1005	CrW			5	hollow ware		5					5	1		eC19	
2	101	1005	PW/ WW?			7	hollow ware		7					7	1		mC19?	
2	101	1006	CrW?			1	hollow ware		1					1	1		eC19?	Very small fragment; marks under glaze appear not to be painted or printed, so could be post-depositional staining.
2	101	1008	CEW			1	jar?		1					1	4		C18/C19?	Dense purple/ red fabric.
2	101	1009	MPW/ CEW?			1	jar?		1					1	1		IC17/eC18	Dense red/purple fabric with iron-rich glaze on interior.
2	101	1010	CrW			1	bowl			1				1	12	1	eC19	
2	101	1010	CrW			5	plate	2		2				4	6	1	eC19	Plain rim.

			description	dec	body	glzd	description	no. base	no. body	no. rim/edge	no. spout	no. handle	no. profile	no. shds					
2	101	1010	CrW			16	hollow ware		16					16	22			eC19	
2	101	1010	WW			1	cup		1					1	6			mC19?	
2	101	1010	WW			4	hollow ware	1	3					4	1			mC19?	
2	101	1012	WW	UGTP (G)		3	tureen/ sauce cover		1	2				3	6	1		m-IC19	Green floral print.
2	101	1016	CrW			5	bowl	2	2	1				5	16	1		eC19	
2	101	1029	PW	UGSpD (B)		3	plate		2	1				3	1	1		mC19	Uncut sponge.
2	101	1029	PW/ WW?	UGTP (B)		1	hollow ware		1					1	1			m-IC19	Very small fragment.
2	101	1036	BStW		turned lines on exterior above base	6	bowl/ chamber pot	1	4	1				6	64	1		e-mC19?	Derbyshire stoneware bowl/ chamber pot with rounded rim.
2	101	1037	SLDWW		'Wormed' design; slip bands below rim on exterior	2	bowl		1	1				2	1	1		mC19?	Red/brown slip coat over which has been applied a black, white and grey (?) wormed/ cabled design. Black slip bands below rim on exterior.
2	101	1040	SB/EgW		moulded geometric design	5	teapot	1	3		1			5	18	1		mC19	
2	101	1041	BStW			1	ink jar	1						1	6			C19	
2	101	1043	WW			5	bowl	1	3	1				5	8	1		m-IC19	
2	101	1044	PW	UGP (G)	shell-edged rim	1	plate			1				1	1	1		mC19	Very small rim fragment of a shell-edged pearlware plate, with under-glaze green painted rim.
2	101	1045	PW	UGP (B)	shell-edged rim	5	plate	1	3	1				5	6	1		mC19	Evenly scalloped and well-moulded
2	101	1046	SLDWW		slip bands on exterior	2	bowl		2					2	1			m-IC19	Black and grey bands.
2	101	1047	PW/ WW?	UGTP (B)		1	hollow ware		1					1	1			mC19?	Probable Oriental print.- 'Willow' or 'Two Temples'?
2	101	1048	WW	UGTP (B)		2	plate/platter	2						2	8			m-C19	Oriental print - 'Willow'?
2	101	1049	PW	UGP		1	saucer			1				1	1	1		e-mC19	Muddy brown band on interior, just below rim. No later than c1830.
2	101	1051	MW			1	hollow ware		1					1	1			IC17-mC18	
2	101	1052	SLDWW		slip bands on exterior	2	bowl	1		1				2	1	1		m-IC19	Yellow and grey bands of slip.
2	101	1053	PW	UGP (B)		2	saucer			2				2	1	1		e-mC19	Blue band on rim; blue florals.

			description	dec	body	glzd	description	no. base	no. body	no. rim/edge	no. spout	no. handle	no. profile	no. shds				
2	101	1055	PW	UGP (B)	Moulded shell-edge	3	plate			3				3	16	1	mC19	Evenly scalloped and well-moulded.
2	101	1056	WW	UGP		1	dish?			1				1	1	1	IC19?	Everted rim of a dish?
2	101	1057	WW	UGTP (B)		2	dish/ tureen?			2				2	1	1	IC19	Floral print.
2	101	1059	CEW			3	hollow ware		3					3	12		C19?	
2	101	1062	BSStW		turned lines on exterior below rim	4	bowl		2	2				4	46	1	mC19?	Derbyshire stoneware bowl with rounded sides and everted rim.
2	101	1069	SLDWW	mocha design over slip ground		1	bowl (carinated)		1					1	1	1	m-IC19	Mocha design over grey slip ground.
2	101	1069	WW	UGTP (Bk)		2	hollow ware		2					2	1	1	m-IC19?	Floral print.
2	101	1070	BW			2	hollow ware		1	1				2	1	1	eC18?	Possible blackware with poor glaze.
2	101	1072	CrW			3	plate			3				3	12	1	eC19	Plain rim.
2	101	1072	PW			1	plate			1				1	1	1	e-mC19	Some doubt over identification as pearlware, but appears to be a firing scar with bluish glaze on edge.
2	101	1078	WW			2	plate		1	1				2	1	1	m-IC19	
2	101	1079	BSStW			3	ink/ blacking jar		3					3	14	1	m-IC19	
2	101	1080	SLDYW		black and blue slip bands	2	bowl		2					2	1		m-IC19	Two bands of pale blue slip, each bounded by lines of black slip.
2	101	1083	BSStW		moulded geometric design	6	chamber pot?		4	1		1		6	30	1	C19	Derbyshire stoneware chamber pot with rounded rim.
2	101	1083	BSStW		turned lines below interior and exterior rim	1	bowl			1				1	4	1	C19	Derbyshire stoneware.
2	101	1084	WW		moulded rim	1	plate			1				1	1	1	m-IC19	
2	101	1084	WW			1	hollow ware		3					3	18		m-IC19	
2	101	1086	SLDWW	slip bands on exterior		1	bowl			1				1	4	1	m-IC19	Black bands of slip.

			description	dec	body	glzd	description	no. base	no. body	no. rim/edge	no. spout	no. handle	no. profile	no. shds				
2	101	1087	BStW		turned line on exterior rim	1	bowl			1				1	2	1	C19	Derbyshire stoneware bowl - everted rim sherd.
2	101	1087	BStW			1	jar			1				1	1	1	C19	Derbyshire stoneware.
2	101	1091	SLDWW	slip bands on exterior		7	bowl		6	1				7	8		m-IC19	Blue and black bands. Degraded glaze. Cross-joins with 1004/2.
2	101	1091	SLDWW	slip bands on exterior		1	bowl?		1					1	1		C19	Orange and black bands of slip.
2	101	1094	BStW			1	ink jar?		1					1	1		C19	
2	101	1097	BStW			1	bowl?		1					1	1		C19	Derbyshire stoneware/
2	101	1101	SLW	trailed and jogged(?) slip		2	dish			2				2	6	1	IC17	Thrown dish of red fabric. Trailed and possibly jogged cream and brown slips.
2	101	1101	CEW/ SLW?				?		1					1	1	1	?	Unglazed fragment of pale orange CEW or SLW.
2	101	1104	PW/ WW?		moulded rim	2	plate			2				2	8	1	m-IC19	Wavy rim; possible additional moulding on rim.
2	101	1105	BStW			1	bowl	1						1	6	1	C18/C19?	Notts/ Derbyshire stoneware.
2	101	1118	BStW			2	hollow ware	1				1		2	8		C19?	Derbyshire stoneware.
2	101	1124	CrW			3	plate	2		1				3	1	1	eC19	Plain rim?
2	101	1124	CrW			7	bowl?		7					7	10		eC19	
2	101	1125	BStW			3	ink jar		3					3	10		m-IC19	
2	101	1126	GStW		Moulded reeding	1	preserve jar		1					1	1	1	IC19	
2	101	1127	SLW	Trailed slip		1	press-moulded dish	1						1	18	1	eC18	Buff fabric with dark slip coat on interior of vessel, over which is trailed light brown and cream slip.
2	101	1127	SLW	Trailed and combed slip		1	press-moulded dish?	1						1	1	1	eC18	Buff fabric with trailed and combed dark slip on interior of vessel.
2	101	1128	PW		moulded rim	1	plate			1				1	1	1	mC19	Wavy edge.
2	101	1128	PW			1	plate			1				1	1	1	mC19	Plain rim.
2	101	1128	PW			6	hollow ware	1	5					6	1		mC19	
2	101	1128	WW			1	bowl			1				1	6		m-IC19	
2	101	1134	PW	UGTP (B)		1	bowl /cup		1					1	1		e-mC19	Oriental design.
2	101	1135	PW	UGTP(B)		2	plate	1	1					2	1		e-mC19	Floral design.

			description	dec	body	glzd	description	no. base	no. body	no. rim/edge	no. spout	no. handle	no. profile	no. shds					
2	101	1140	BStW		moulded geometric design on exterior	2	bowl	2						2	14			C19	Derbyshire stoneware.
2	101	1143	BStW			3	handled hollow ware		3					3	14			C19	Derbyshire stoneware. Trace of handle terminal on one body sherd.
2	101	1143	BStW			1	ink jar?		1					1	1			C19	
2	101	1146	PW		floral moulding on rim	6	plate			6				6	1	1		mC19	
2	101	1148	CrW/ WW?			1	plate			1				1	4	1		C19	Post-depositional staining.
2	101	1151	SLW	trailed slip		1	dish	1						1	1	1		IC17	Thrown dish of orange/red fabric. Cream-coloured slip trailed on vessel interior.
2	101	1158	BBEW				marble							1	4	1		C19?	Hand rolled marble.
2	101	1161	WW		moulded body	2	basin		2					2	40	1		IC19	
2	101	1166	PW	UGTP (B)		1	bowl	1						1	1			e-mC19	Cross joins with 2 110 1013 and 3 201 027.
2	101	1167	CEW			2	pancheon		8	1				9	54	1		C19	
2	101	1174	SLDYW	slip bands on exterior		1	bowl (carinated)		1					1	4			m-IC19	White slip bands above base on exterior.
2	101	1180	SB/EgW		moulded beading and floral designs	14	teapot	2	9	2	1			14	66	1		mC19?	
2	101	1180	SB/EgW		moulded geometric and floral designs		teapot cover			1				1	22	1		mC19?	Some possible patches of glaze on upper-side rim, but rest is unglazed. Post-depositional damage?
2	101	1183	BStW		moulded geometric design	1	bowl/ dish cover			1				1	18	1		mC19?	
2	101	1183	BStW		moulded beading	1	bowl			1				1	26	1		mC19?	Notts/ Derbyshire slope-sided bowl with slightly everted, rounded rim.
2	101	1183	BStW			1	bowl			1				1	1	1		mC19?	Derbyshire small bowl with slightly everted rim.

			description	dec	body	glzd	description	no. base	no. body	no. rim/edge	no. spout	no. handle	no. profile	no. shds				
2	101	1183	BStW		moulded geometric designs; turned lines	4	hollow ware		3					4	22		mC19?	Derbyshire stonewares, probably bowls or jars.
2	101	1184	CrW	OGBP (Rd)		1	hollow ware		1					1	8	1	IC18?	Over-glaze bat print.
2	101	1185	SLDYW	Dark blue/black slip on rim edge		2	dish/bowl		1	1				2	8	1	IC19	Dish or bowl with everted rim.
2	101	1186	SLDWW	wormed' slip?		1	bowl			1				1	14	1	mC19	Surface has delaminated, but appears to have featured blue, orange and black wormed or cabled design.
2	101	1189	PW	UGP (G)	shell-edged rim	1	cup plate			1				1	1	1	e-mC19	Cup plate with well-embossed shell-edged rim. Glaze and colour degraded - post depositional change? Date of 1820s/30s likely. Cross-joins with sherd from 2 110 1150/1.
2	101	1189	PW	UGP (G)	shell-edged rim	1	plate			1				1	1	1	e-mC19	Very small rim fragment of a shell-edged pearlware plate, with under-glaze green painted rim.
2	101	1189	SLDPW	slip decorated	turned lines below exterior rim	1	bowl			1				1	1	1	e-mC19	Copper staining underglaze.
2	101	1189	PW			1	dish?			1				1	1	1	mC19?	Possible dish with everted rim.
2	101	1189	WW	UGTP (G)		1	hollow ware		1					1	1		m-IC19?	
2	101	1189	WW	UGTP (Poly)		5	plate		5					5	8	1	IC19/C20	Polychrome floral print.
2	101	1192	CrW/ WW?		moulded form	3	bowl		2	1				3	22	1	C19	Discoloured glaze and body due to post-depositional staining - difficult to determine if this is creamware or a later whiteware. Moulded, lobed body with wavy rim.
2	101	1220	PW	UGP (Poly)		2	saucer?		2					2	1		e-mC19	Polychrome floral pattern, similar to examples from 2 1002. Unlikely to post date c.1830.
2	102	1026	SB/EgW				bowl	1						1	12	1	mC19	Degraded surface - burnt? Similar to condition of teapot from 101 1180.
2	102	1031	BStW		moulded form	1	handled hollow ware					1		1	6		C19	Derbyshire stoneware.

			description	dec	body	glzd	description	no. base	no. body	no. rim/edge	no. spout	no. handle	no. profile	no. shds				
2	102	1155	CEW			8	pancheon		8					1	48			C19?
2	102	1173	PW/ WW?			4	plate	4						4	20			mC19?
2	102	1176	MPW/ CEW?				jar		2					2	26			IC17/C18?
2	102	1207	PW/ WW?			4	plate	3	1					4	24			mC19
2	103	210	SB/EgW		moulded basketwork and beading on body.	15	teapot	9	6					15	100			mC19
2	103	1245	PW	UGP (B)		4	saucer	4						4	28			e-mC19
2	104	1013	CEW			6	pancheon	3	2	2				6	224	2		C19
2	104	1013	MPW/ CEW?				jar?		1					1	10			C17/C18?
2	104	1014	BW			1	hollow ware	1						1	6			IC17/C18
2	104	1030	SB/EgW			1	jug/ teapot?					1		1	1			mC19
2	104	1058	BStW			1	hollow ware		1					1	6			C19
2	104	1205	PW	UGP (Br)		1	hollow ware		2					2	6			e-mC19
2	104	1242	CGW			1	hollow ware		1					1	1	1		IC19
2	104	1264	CEW			4	jar		4					4	70			C19
2	105	401	CGW			1	hollow ware		1					1	3			IC19
2	105	1007	GStW			1	jar		1					1	57	1		C19
2	105	1011	BC	OGG	moulded decoration on body	2	ewer?		2					2	6	1		m-IC19
2	105	1154	WW			6	saucer?	5	1					6	12			m-IC19
2	105	1154	WW			1	dish			1				1	1	1		m-IC19
2	105	1254	AgEW				marble						1	1	4	1		C19?
2	105	1400	WW	OGLP & OGP		3	cup	1	2					3	48	1		IC19/C20
2	105	1402	CGW			1	cup			1				1	16	1		C20
2	105	1403	WW	OGLP (Poly)		2	cup			2				2	60	1		IC19-C20

Dense, hard-fired red/ orange fabric, unglazed/. Possible butterpot.

Cylindrical form; identical to sherds from 101 1180.

Floral design in blue; c.1830s? Impressed star on underside of base.

Dense orange fabric, unglazed.

Painted brown line around exterior base; Pre-c1830.

Bright yellow glaze over white fabric. Identical to sherd from 105 401 and 110 1175.

Bright yellow glaze over white fabric. Identical to sherds from 104 1242 and 110 1175.

Grey stoneware with lead glaze.

Red and white agate marble, unglazed. Floral print and red painted bands around exterior body and rim. '[MA]DE [IN ENG]LAND' impressed on base: cross-joins with base sherd from 2 105 1407.

Pink glaze on exterior.

Polychrome floral lithographic print; UGP around rim.

			description	dec	body	glzd	description	no. base	no. body	no. rim/edge	no. spout	no. handle	no. profile	no. shds				
2	105	1404	WW	UGTP & OGP		1	plate			1				1	64	1	C20	Black print with green and brown painted elements.
2	105	1405	WW			2	bowl			2				2	78	1	IC19	Collar around rim; pudding bowl/ basin?
2	105	1406	WW			1	plate			1				1	44	1	IC19	Plain rim.
2	105	1407	BC	UGTP & OGP		2	saucer			2				2	14	1	IC19	Under-glaze transfer print, probably in black, with over-glaze enamels that have either degraded or were not properly fixed. The latter could indicate that this is a second.
2	105	1407	WW	OGLP & OGP		1	cup	1						1	8		IC19	MA[DE IN] ENG[LAND]' impressed on base. Cross-joins with sherds from 2 105 1400.
2	105	1407	WW			3	?		3					3	2		IC19?	
2	105	1408	HW				flower pot	2		1				3	22	1	C19?	
2	105	1429	CEW			1	bowl?		1					1	8		C19?	
2	105	1430	CEW			1	jar?		1					1	16		C19	
2	105	1431	CEW			1	pancheon		1					1	4		C19	
2	107	1138	PW/ WW?	UGP (B)		3	saucer			3				3	36	1	e-mC19?	Blue floral design on interior.
2	108	1019	RefYW			1	hollow ware		1					1	1		m-IC19	
2	108	1139	PW	UGP (Poly)		2	tea pot cover			2				2	10	1	e-mC19	Painted florals in green and brown in centre within blue band. Dot-and-diaper painted border in orange. Pre-c1830 (1800-1820?).
2	108	1247	CEW			1	pancheon	1						1	22	1	C19	
2	109	1152	CEW/ BW?			4	hollow ware	2	2					4	12		C18?	Purple/ red fabric with rich black glaze.
2	109	1152	SLW			1	hollow ware		1					1	1		IC17- mC18	Very small fragment with buff fabric; iron rich slip with white trailing?
2	110	1009	PW	UGP (B)	shell-edged rim	10	plate			10				10	44	2	e-mC19	Evenly-scalloped, well embossed with blue painted rims; c.1820s/ 30s.
2	110	1011	PW	UGP (Poly)		11	tea bowl	1	8	2				11	22	1	e-mC19	Polychrome (green and blue) floral design (green dots and blue stem and leaves) on exterior. Blue line around rim and interior base. Pre-c.1830 (c.1800-1820?). Similar to 2 101 1002 and 1220?
2	110	1011	PW	UGP (Poly)		13	saucer	3	3	7				13	34	1	e-mC19	Same polychrome design as tea bowl above
2	110	1011	PW	UGP (Poly)		21	saucer	5	11	5				21	28	1	e-mC19	Polychrome (green, blue, brown, yellow) on interior. Blue line around rim. Pre-c.1830 (c.1800-1820?).
2	110	1011	PW	UGP (B)		1	hollow ware	1						1	1		e-mC19	
2	110	1012	SLDPW	slip bands on exterior		7	bowl		5	2				7	26	2	e-mC19	Black and black and brown bands.

			description	dec	body	glzd	description	no. base	no. body	no. rim/edge	no. spout	no. handle	no. profile	no. shds					
2	110	1012	SLDPW	wormed slip		3	bowl		3					3	8			e-mC19	Largest fragments have blue, white and black wormed design over orange slip ground.
2	110	1013	PW	UGTP (B)		6	bowl	2	2	2				6	44	1		e-mC19	Landscape scene; c.1810/20s? Cross joins with 2 101 1166 and 3 201 027.
2	110	1013	PW	UGTP (B)		8	cup	5	2			1		8	6			e-m19?	
2	110	1014	PW	UGTP (B)		14	bowl	3	7	4				14	14	2		e-mC19	Two-temples' design.
2	110	1014	PW			1	?	1						1	1			e-mC19	
2	110	1015	PW	UGTP (B)		5	plate	4		1				5	4	1		e-mC19	Willow print.
2	110	1015	PW	UGTP (B)		4	plate		3	1				4	4	1		e-mC19	Floral print/
2	110	1015	PW	UGTP (B)		1	plate			1				1	4	1		e-mC19	Floral print; plain rim.
2	110	1015	PW	UGTP (B)		1	plate?			1				1	1	1		e-mC19	
2	110	1015	PW	UGTP (B)		1	saucer			1				1	4	1		e-mC19	Floral print.
2	110	1015	PW	UGTP (B)		1	saucer?			1				1	1	1		e-mC19	
2	110	1015	PW	UGTP (B)		1	bowl			1				1	1	1		e-mC19	
2	110	1015	PW/ WW?	UGTP (B)		1	bowl/cup?	1						1	4			mC19?	
2	110	1015	PW	UGTP (B)		13	hollow ware		13					13	6			e-mC19	Small hollow ware fragments with various printed designs.
2	110	1015	PW	UGP (B); slip coat on exterior?		1	tea bowl			1				1	1	1		eC19?	Cross-hatched painted design below interior rim; possible brown slip coat in exterior.
2	110	1015	PW	UGP (B)?	turned lines	1	hollow ware		1					1	1			e-mC19	
2	110	1015	PW	UGP (B)?		1	plate			1				1	1	1		e-mC19	Blue paint on rim, but face of sherd delaminated.
2	110	1015	PW			1	plate			1				1	2	1		mC19	Wavy edge.
2	110	1015	PW			1	hollow ware		1					1	1			e-mC19	Very small body sherd.
2	110	1015	PW/ WW?	UGP (B)		1	plate			1				1	6	1		mC19	Panelled rim, blue paint on edge.
2	110	1015	PW/ WW?	UGP (B)		1	saucer	1						1	1			mC19	Blue line painted around interior base.
2	110	1015	PW/ WW?			1	plate	1						1	1			mC19?	Small discoloured sherd/
2	110	1016	CEW			96	pancheon	17	142	14				173	1022	7		C19	
2	110	1016	CEW			1	jar?	1						1	28			C19	
2	110	1016	MPW/ CEW?			1	jar/ butter pot?		1					1	14			C18?	Fine red/ purple fabric with patchy glaze on interior.
2	110	1017	CrW			1	bowl			1				1	1	1		eC19	
2	110	1017	CrW			2	plate	1		2				2	1	1		eC19	
2	110	1017	CrW			11	misc	2	9					11	20			eC19	
2	110	1017	PW			17	bowl/ cup (carinated)	4	9	4				17	66	1		e-mC19	
2	110	1017	PW			2	saucer?	2		1				2	1	1		e-mC19	

			description	dec	body	glzd	description	no. base	no. body	no. rim/edge	no. spout	no. handle	no. profile	no. shds				
2	110	1017	PW		moulded rim	1	plate			1				1	1	1	e-mC19	Foliate moulding on rim.
2	110	1017	PW			17	?	6	11					17	22		e-mC19	Collection of small miscellaneous body and base fragments.
2	110	1017	BC			1	hollow ware		1					1	1		m-IC19	
2	110	1018	BStW		moulded beading, rouletting on exteriors	15	bowl		8	6		1		15	68	3	C19	Derbyshire stonewares.
2	110	1019	BStW		turned lines	55	bowl	5	40	9		1		55	274	8	C19	Derbyshire stonewares.
2	110	1019	CEW			1	?	3	1					4	8		C19?	
2	110	1020	CrW			5	bowl	3	1	1				5	70	1	eC19	
2	110	1020	CrW			15	plate	6	2	7				15	50	1	eC19	
2	110	1020	CrW			1	teapot		1					1	1		eC19	
2	110	1020	CrW			1	jug/ pitcher?					1		1	8	1	eC19	
2	110	1020	CrW			54	hollow ware	8	46					54	66		eC19	
2	110	1020	CrW	UGP		1	saucer?			1				1	1	1	IC18/eC19?	Possible floral decoration in orange.
2	110	1020	SLDCrW?	wormed' slip		1	hollow ware		1					1	1	1	eC19?	Wormed or cabled design on small fragment of a hollow ware vessel,
2	110	1020	CrW			6	flatware?	6						6	24		eC19	
2	110	1020	PW			3	bowl			3				3	8	1	e-mC19	
2	110	1020	PW			8	plate	6	1	1				8	16	1	e-mC19	Plain rim.
2	110	1020	PW		foliate moulding on rim	1	plate			1				1	1	1	e-mC19	
2	110	1020	PW	UGP	shell-edged rim	1	plate			1				1	1	1	e-mC19	Small rim fragment.
2	110	1020	PW	UGP		3	saucer	1		2				3	1	1	e-mC19	Small fragments of at least one painted vessel.
2	110	1020	PW			1	hollow ware			1				1	1	1	e-mC19	
2	110	1020	PW				hollow ware	26	35					61	72		e-mC19	
2	110	1020	WW	UGTP (B)		1	saucer			1				1	6	1	m-IC19	
2	110	1020	WW	UGTP (G)		1	cup?					1		1	1		m-IC19?	Very small handle fragment with tiny patch of printed design.
2	110	1020	BC			1	saucer	1						1		1	m-IC19	
2	110	1020	WW			1	plate			1				1	1	1	m-IC19	

			description	dec	body	glzd	description	no. base	no. body	no. rim/edge	no. spout	no. handle	no. profile	no. shds					
2	110	1021	CEW			2	jar		1			1		2	20	1		C19	
2	110	1021	MPW/ CEW?			1	butter pot?		1					1	6			C18?	Dense purple fabric, iron-rich glaze on interior and exterior.
2	110	1021	CEW/ BW?			9	bowl/ chamber pot?		6	1		2		9	16	1		C18?	
2	110	1021	HW				plant pot		4					4	20			C19?	
2	110	1021	SB/EgW		moulded beading and palmettes on rim	1	teapot			1				1	1	1		mC19	Identical form to example from (101) 1180.
2	110	1022	SLCW			5	bowl		3	2				5	12	2		C18?	Pale pink/ buff body with iron-rich slip coat beneath dark glaze
2	110	1022	CEW/ BW?			3	bowl	2		1				3	10	1		C18?	Red body, fine black glaze.
2	110	1022	StW			1	jar?	1						1	12	1		?	Could be over-fired MPW.
2	110	1022	MPW/ CEW?			3	jar?		3					3	20			C18?	Dense purple fabric, iron-rich glaze on interior and exterior.
2	110	1054	BStW			3	ink/ blacking jar	3						3	124			C19	
2	110	1071	PW	UGP (Poly)		2	tea pot cover		2					2	6	1		e-mC19	Polychrome (blue, green, brown, orange) floral design. Pre-c1830 (c.1800-1820)
2	110	1071	PW	UGP (Poly)		1	hollow ware		1					1	1			e-mC19	Polychrome (blue, green, brown, orange) floral design. Pre-c1830 (c.1800-1820)
2	110	1074	PW	UGTP (B)		2	bowl/ cup (carinated)		2					2	1	1		mC19	Oriental landscape print?
2	110	1085	BC		moulded body	1	cup			1				1	4	1		m-IC19	Wavy rim, lobed body.
2	110	1090	SLW	trailed slip		1	dish	1						1	8	1		IC17/eC18	Press-moulded dish. Orange fabric; white slip coat over which has been trailed lines of brown slip.
2	110	1100	SLDWW	mocha design over slip ground		2	hollow ware		2					2	1			C19	Mocha design over orange slip ground.
2	110	1111	MW			7	hollow ware		7					7	26	1		IC17- mC18	One sherd has a pale orange fabric, the rest are buff bodied. Handle terminal on one body sherd.
2	110	1117	YW			3	hollow ware		1					3	14	1		IC17?	Buff fabric, lead glaze on interior.
2	110	1117	SLW		moulded decoration?	1	dish?	1						1	1	1		IC17?	Possible press-moulded dish with relief decoration. Abraded.

			description	dec	body	glzd	description	no. base	no. body	no. rim/edge	no. spout	no. handle	no. profile	no. shds					
2	110	1117	?				?							2	4				? One small abraded vessel sherd of orange/buff fabric. Fragment of orange fabric with possible finger/ thumb impression?
2	110	1119	PW	UGTP (B)		2	saucer	1		1				2	14	1	e-mC19	Two Temples' pattern; wavy rim.	
2	110	1122	PW	UGTP (B)		3	saucer	3						3	6	1	e-mC19	Floral print; c.1800-1820?	
2	110	1131	RefYW			7	chamber pot?	4	2	1				7	20	1	m-IC19	Possible impressed manufacturer's mark on one sherd '...& PR.'	
2	110	1133	RBEW		sprigged design	1	hollow ware		1					1	4	1	IC19	Red-bodied earthenware with black slip coat on exterior, white slip coat on interior. White sprigged design.	
2	110	1133	SLDWW	slip decorated		1	hollow ware		1					1	1		C19	Very small fragment, with black slip on exterior.	
2	110	1141	PW		rouletted design below exterior rim	1	bowl			1				1	1	1	e-mC19	Copper wash over decoration; c.1820s/30s?	
2	110	1141	PW	UGSpD (G)?	turned lines below exterior rim	1	mug?			1				1	1	1	e-mC19	Copper wash over turned lines. Possible evidence of uncut sponge decoration. c.1820s/30s?	
2	110	1144	PW	UGP (B)?		3	bowl	2	1					3	16	1	e-mC19	c.1800-1820?	
2	110	1144	PW			3	plate	2	1					3	36		e-mC19		
2	110	1149	WW	UGTP (G)		3	cup/bowl		2	1				3	1	1	m-IC19	Geometric printed design.	
2	110	1163	MPW/ CEW?			1	pancheon		1					1	18		C17?		
2	110	1163	MPW				ink jar?	1						1	16	1	C17?		
2	110	1168	PW	UGTP (B)		2	saucer	2						2	8	1	e-mC19	Geometric printed design.	
2	110	1168	PW	UGTP (B)		3	bowl?	1	2					3	1		e-mC19	Matches pattern above.	
2	110	1175	CGW			1	hollow ware		1					1	1		IC19	Bright yellow glaze over white fabric. Identical to sherd from 104 1242 and 105 401.	
2	110	1433	SLDPW	slip bands on exterior	turned lines	4	mug?		4					4	4	1	e-mC19	Brown and black slip bands on exterior; short turned lines in vertical band.	
2	110	1433	SLDPW	wormed slip?		2	hollow ware		2					2	1		e-mC19		
2	110	1444	SB/EgW			4	tea pot		4					4	36		mC19	Red/ purple body with lustrous black glaze.	
2	110	1444	PW	UGP (G)	shell-edged rim	1	cup plate			1				1	1		e-mC19	Cross-joins with 2 101 1189/1.	

			description	dec	body	glzd	description	no. base	no. body	no. rim/edge	no. spout	no. handle	no. profile	no. shds					
2	110	1444	PW			1	bowl			1				1	1	1		e-mC19	
2	110	1444	SLDPW	slip bands on exterior		1	bowl (carinated)		1					1	1			e-mC19	
2	110	1444	PW			1	?	1						1	1			e-mC19	Very small fragment, probably a base sherd.
2	110	1444	WW	OGLP (Poly)		1	hollow ware		1					1	12	1		IC19	Nursery print?
2	110	1444	RefYW			1	bowl	1						1	14	1		IC19?	
2	110	1444	BC	UGP (Rd)		1	saucer	1						1	6	1		m-IC19	Floral design in red on interior.
2	110	1445	MPW/ CEW?				jar?		2					2	26			C18?	
2	110	1445	StW			1	bottle/jar?		1					1	6	1		C19	
2	110	1458	BBEW				marble						1	1	1	1		C19?	
2	112	1008	PW	UGTP (B)		16	bowl	4	12					16	62	1		e-mC19	
2	112	1050	MPW				butter pot/ jar			1				1	10	1		IC17/C18	Rim sherd of MPW butter pot or jar.
2	112	1061	SLW			1	bowl/porringer			1				1	1	1		IC17-mC18	Extent and type of slip decoration is not clear.
2	112	1064	PW	UGP (B)	shell-edged rim	4	plate			4				4	12	1		e-mC19	Scalloped, well-embossed; c1820s/1830s.
2	112	1210	PW/ WW?	UGTP (B)		2	cup			2				2	8	1		mC19	Oriental landscape print.
2	112	1212	CEW			3	hollow ware		3					3	26			C18/C19?	
2	112	1212	CEW			2	jar?		2					2	26			C18/C19?	
2	112	1214	MW			1	hollow ware		1					1	1			IC17-mC18	Small fragment of red-bodied fabric with streaky, brown glaze. Possible mottled ware, but could be blackware.
2	112	1215	WW			1	hollow ware		1					1	1			C19?	White earthenware with blue, pitted interior and exterior glaze.
2	112	1218	PW	UGTP (B)		1	plate						1	1	58	1		e-mC19	'Willow' pattern. Printed '10' on underside; spur marks on underside of rim.
2	112	1218	PW	UGTP (B)		1	bowl			1				1	1			e-mC19	Cross-joins with 2 120 1025.
2	112	1221	CEW			2	pancheon		2					2	30	1		C19?	
2	112	1224	CEW/ BW?			2	hollow ware		2					2	6			IC17-mC18	Orange body, fine iron-rich glaze.
2	112	1225	BStW			1	hollow ware	1						1	10			C19?	
2	114	1007	CEW			9	pancheon		11	2				13	264	1		C19?	
2	114	1007	CEW			1	jar?		1					1	120			C19?	
2	114	1123	MW			1	bowl/porringer			1				1	1	1		IC17-mC18	
2	114	1120	SLW	joggled slip		1	dish	1						1	15	1		IC17-mC18	Press-moulded dish. Pinkish-buff fabric with white and light brown slip trailed and joggled over dark brown slip ground,
2	114	1202	BW			2	hollow ware		2					2	24			IC17-mC18	Red/ orange fabric with fine black glaze over interior and exterior surfaces.

			description	dec	body	glzd	description	no. base	no. body	no. rim/edge	no. spout	no. handle	no. profile	no. shds				
2	114	1204	BStW		rouletted decoration and turned lines on exterior body	5	bowl		1	4				5	54	1	C19	Derbyshire stoneware.
2	114	1258	WCEW				marble							1	10	1	C19?	
2	114	1263	MPW				butter pot		1	1				2	16	1	IC17/C18	Flattened collared rim.
2	114	1263	CEW			3	pancheon?	1	2					3	22		C18/C19?	
2	115	230	CGW			1	cup		1					1	1		IC19	Identical to example from 2 105 1402.
2	116	1223	MW			1	hollow ware		1					1	1		IC17-mC18	
2	116	1233	CEW			2	pancheon	2						2	26	1	C19	
2	117	1132	PW	UGTP (B)		1	bowl			1				1	6	1	e-mC19	Same floral print as example from 2 120 1015 (possibly same vessel too).
2	117	1198	SLW	joggled slip	rouletted rim	1	dish			1				1	6	1	IC17-mC18	Press-moulded dish with rouletted 'pie-crust' edge. Buff fabric, cream, brown and dark brown trailed and joggled slips.
2	120	1025	PW	UGTP (B)		5	bowl		2	3				5	14		e-mC19	Same floral print as example from 2 117 1132 (possibly same vessel too). Cross joins with 2 112 1218
2	120	1257	PW/ WW?	UGP (B)		2	cup		2					2	1	1	mC19?	
2	126	1015	WW	UGP (Poly)		1	plate	1						1	34	1	C20	Yellow and green foliate design.
3	201	001	WW	UGTP (B)		9	plate	6	3					9	14		m-IC19	Asiatic Pheasants' pattern. Cross joins with 3 (201) 035 & 059.
3	201	002	CEW				?							1	4		C18/C19?	Soft-fired pale orange fabric, unglazed.
3	201	011	YW			1	hollow ware	1						1	1		C17	Tiny fragment.
3	201	012	PW	UGP (Poly)		1	tea bowl?		1					1	1	1	eC19	Floral design in green and brown. Very small fragment.
3	201	013	WW	UGTP (Bk)		2	plate	2						2	1		m-IC19	Same leaf and acorn border as 2 (101) 1003 - probably the same vessel
3	201	014	SLW	Trailed slip over ground coat		1	dish	1						1	10	1	IC17-mC18	Press-moulded dish. Buff fabric, black ground with trailed white slip.
3	201	015	BStW		impressed floral design	1	hollow ware		1					1	1	1	C19	Derbyshire stoneware.
3	201	020	PW	UGP (B)		1	hollow ware		1					1	1		e-mC19	

			description	dec	body	glzd	description	no. base	no. body	no. rim/edge	no. spout	no. handle	no. profile	no. shds					
3	201	021	PW/ WW?				hollow ware	1						1	1			C19?	Appears to be an unglazed white ware footring base sherd. Soft fabric and unglazed, probably through abrasion.
3	201	024	CEW				?							1	1			?	
3	201	027	PW	UGTP (B)		2	bowl	1	1					2	16			e-mC19	Cross-joins with 2 101 1166 and 2 110 1013.
3	201	027	CEW			52	pancheon	17	38	10				65	925	4		C19	
3	201	034	CEW				?							2	1			?	Two small, conjoining fragments of unglazed, red-bodied earthenware; abraded. Possibly CEW.
3	201	035	WW	UGTP (B)		11	plate		9	2				11	14	1		m-IC19	Asiatic Pheasants' pattern. Cross joins with 3 (201) 001 & 059.
3	201	037	BW			1	hollow ware		1					1	4			IC17-mC18	
3	201	043	StW		reeding on exterior surface.		hollow ware (preserve jar?)		1					1	1			IC19	Abraded, unglazed sherd of grey fabric.
3	201	045	MPW/ CEW?			2	jar		2					2	28	1		C18?	Cross-joins with 3 (201) 055.
3	201	045	SLCW			1	hollow ware		1					1	8			C18?	Buff fabric with slip coat beneath dark glaze.
3	201	046	PW			1	plate	1						1	1	1		e-mC19	
3	201	048	SLCW			1	hollow ware		1					1	1			C18?	Buff fabric with slip coat beneath dark glaze.
3	201	055	MPW/ CEW?			1	jar		1					1	34			C18?	Cross-joins with 3 (201) 045.
3	201	059	WW	UGTP (B)		10	plate	8		2				10	18			m-IC19	Asiatic Pheasants' pottery. Cross joins with 3 (201) 001 & 035
3	201	059	BStW			3	bowl	3						3	40			C19	Derbyshire stoneware.
3	201	062	BStW			2	jug	1	1					2	34	1		C19	Derbyshire stoneware. Baluster form.
3	201	064	StW		Moulded reeding on exterior.	2	preserve jar	1	1					2	106	1		IC19	Impressed 'lighthouse' mark of W. P. Hartley, Aintree on base. 1886+
3	201	070	CEW/ MW?			2	hollow ware	1	1					2	32	1		C18?	Buff fabric with slightly speckled/ streaked mid-dark brown glaze on interior and exterior body. Interior glaze is slightly reduced.
3	201	070	CEW			1	pancheon		1					1	1			C18/C19?	Orange fabric with light brown streaky glaze on interior.
3	202	076	CEW				?		2					2	1			C19?	
3	202	077	MPW				butter pot/ jar		1					1	6			IC17-C18	
3	202	078	BStW			1	bowl/ jar?	1						1	12			C19	
3	202	079	CrW			1	saucer			1				1	1	1		eC19	
3	202	080	PW	UGP		1	tea bowl?		1					1	1			eC19	Painted band in black above exterior base.

			description	dec	body	glzd	description	no. base	no. body	no. rim/edge	no. spout	no. handle	no. profile	no. shds					
3	202	081	CEW			1	pancheon		1					1	6			C19	
3	202	083	CrW			4	plate			4				4	4	1		eC19	Wavy edge.
3	202	084	SLCW			1	dish			1				1	4	1		C18	Buff fabric with slip coat beneath dark glaze.
3	202	085	PW	UGP (Poly)		1	saucer?	1						1	1	1		e-mC19	Polychrome floral design in blue, brown, orange and green. Muted colours - pre-dates c.1830.
3	202	086	CEW			2	pancheon?		3					3	2			C19?	
3	202	090	CEW				pancheon		1					1	6			C19	
3	202	091	CEW				?							1	1			C19?	
3	202	092	CEW			2	pancheon	1	1	1				3	52	1		C19?	
3	202	093	MW			1	hollow ware		1					1	1	1		IC17-mC18	
3	202	094	CEW			1	pancheon?	1						1	1			C19?	
3	202	095	PW	UGTP (B)		1	hollow ware		1					1	1			e-mC19	Landscape print?
3	202	096	PW	UGTP (B)		1	cup		1					1	1	1		e-mC19	Floral print.
3	202	097	CEW			1	pancheon		1					1	16			C19	
3	202	100	CrW			1	plate?		1					1	1			eC19	
3	202	102	CEW				?		1					1	1			C19?	
3	202	105	MPW			1	butter pot/ jar?		1					1	6			IC17-C18	
3	202	106	BSGSW			1	hollow ware		1					1	1	1		C18?	Fine body, brownish hue on exterior surface.
3	205	115	PW			1	hollow ware?	1						1	1			e-mC19	
3	205	123	WW			1	plate		1					1	1	1		m-IC19?	
3	205	124	WW	UGTP (B)		2	plate		2					2	4	1		m-IC19	Blue floral print.
3	205	125	PW			1	plate		1					1	1			mC19?	
3	205	126	PW			1	?	1						1	1			e-mC19	
3	205	132	StW		reeding moulding on exterior body	1	preserve jar		1					1	4			IC19	
3	205	134	CEW			1	pancheon/ bowl?		1					1	6			C18/C19?	Dense red fabric, rich black glaze on interior.
3	205	135	WW			1	flatware	1						1	1			m-IC19	
3	205	136	WW	UGP (Br)		1	plate			1				1	1	1		m-IC19	Painted bands on rim.
3	205	148	WW	UGTP (B)		1	basin?		1					1	4	1		m-IC19	Floral print.
3	205	149	CEW			1	pancheon		1					1	24			C19	
3	205	150	PW/ WW?			1	?							1	1			C19	
3	205	151	BW			1	chamber pot?		1					1	6	1		IC17-mC18	
3	205	152	CEW				pancheon/ bowl?		1					1	1			C19?	

			description	dec	body	glzd	description	no. base	no. body	no. rim/edge	no. spout	no. handle	no. profile	no. shds				
3	205	154	BStW		turned lines around base	1	bowl	1						1	34	1	C19	Derbyshire stoneware.
3	205	155	CrW			1	hollow ware?		1					1	1		eC19	
3	205	156	PW			1	plate		1					1	1		e-mC19	
3	205	157	CEW				?		1					1	1		C18/C19?	
3	205	159	SLCW			1	bowl/ porringer	1						1	8	1	C18	Buff fabric with slip coat beneath dark glaze.
3	206	103	BW			4	cup		3	1				4	12	1	IC17-mC18	
3	206	104	SLW	trailed and jewelled slip		2	dish	2						2	34	1	IC17	Thrown dish; brown slip trailed on interior with white slip jewellery.
3	206	107	CEW			1	?		1					1	1		C19	
3	206	108	CEW				?							2	1		C19	
3	206	109	CEW				?							1	1		C19	
3	206	112	PW	UGTP (B)		1	saucer	1						1	1		eC19	Floral print; possible fragment of a printed mark on underside of base.
3	206	113	BStW			1	handled bowl?					1		1	6	1	C19	
3	206	114	PW	UGP (Poly)		1	saucer	1						1	1	1	eC19	Green, brown and orange floral design. Predates introduction of 'chrome' colours, so pre-c.1830.
3	206	116	CEW			1	?							1	1		C19?	Tiny fragment - appears to be CEW.
3	206	117	CEW			1	pancheon	1						1	10		C19	
3	206	118	PW/ WW?	UGTP (B)		1	plate	1						1	1		mC19?	Landscape print.
3	206	119	MPW				butter pot		1					1	14	1	IC17-C18	Possible stamp on body.
3	206	120	CEW			1	pancheon			1				1	22	1	C19	
3	206	121	MPW			1	jar/ butter pot		1					1	20		IC17-C18	
3	206	122	CEW				?		1					1	1		C19	
3	206	127	CEW			2	bowl/ jar?	1	1					2	34		C19	
3	206	128	PW			1	?							1	1		e-mC19?	Tiny fragment, appears to be a pearlware.
3	206	129	CEW			2	pancheon		2					2	28		C19	
3	206	130	CEW			1	pancheon	1						1	8		C19	
3	206	133	CEW				pancheon?		1					1	1		C19	
3	206	137	PW/ WW?			1	?		1					1	1		mC19	
3	206	138	BStW			1	bowl?			1				1	1	1	C19	
3	206	139	PW			1	?		1					1	1		e-mC19	
3	207	142	CEW			1	pancheon		1					1	14		C18/C19	
3	207	175	CEW			6	jar?		19					19	28		C19	
3	207	176	CEW			1	pancheon?	1						1	8		C19?	

			description	dec	body	glzd	description	no. base	no. body	no. rim/edge	no. spout	no. handle	no. profile	no. shds				
3	207	209	BW			1	bowl/ porringer?					1		1	2	1	IC17-mC18	Red fabric with rich dark glaze.
3	207	212	MW			1	hollow ware		1					1	1		IC17-mC18	
3	208	143	CEW			1	pancheon?		1					1	12		C18/C19?	
3	208	144	CEW			2	?		11					11	6		C19?	
3	208	145	CEW			1	pancheon		1					1	32		C19?	
3	208	146	CEW			1	pancheon?		4					4	8		C19?	
3	208	147	CEW			1	pancheon?	1						1	2		C19?	
3	208	191	SLCW			1	hollow ware		1					1	1		C18?	Buff fabric with probable slip coat under dark glaze. Probably the same vessel as 192 and 194 below.
3	208	192	SLCW			1	hollow ware		1					1	1		C18?	Buff fabric with probable slip coat under dark glaze.
3	208	194	SLCW			1	bowl			1				1	2	1	C18?	Buff fabric with slip coat under dark glaze. Probably the same vessel as 191 and 192 above.
3	208	195	CEW				?		1					1	1		C19?	
3	208	196	CEW				pancheon			1				1	10	1	C19	Thickened and flattened rim.
3	208	197	MPW				?							1	8		IC17-C18	
3	208	198	CEW				?		1					1	1		C19?	
3	208	199	CEW				?		1					1	1		C19?	
3	208	200	MPW				butter pot/ jar		2					2	14		IC17-C18	
3	208	202	CEW			1	pancheon?		1					1	14		C19?	
3	208	221	CEW			2	pancheon	1	1					2	14		C19	
3	209	73	MPW				jar/ cistern		2					2	56		IC16-C17	
3	209	160	CEW				?							1	1		C19?	
3	209	161	CrW			1	bowl			1				1	1	1	eC19	
3	209	162	BW			1	hollow ware		1					1	1		IC17-mC18	
3	209	163	BStW			1	hollow ware		1					1	8		C19	
3	209	164	BStW			1	bowl/ jar?	1						1	1		C19	
3	209	165	SLCW			1	bowl	1						1	6		C18	Buff fabric with slip coat beneath dark glaze.
3	209	166	CEW			1	pancheon		1	1				2	52	1	C19	
3	209	167	CEW			2	pancheon		2					2	14		C19	
3	209	168	BW			1	hollow ware	1						1	1		IC17-mC18	Red fabric with rich dark glaze on vessel interior. Slight raised line on interior base is probably a throwing mark.
3	209	171	BW			1	hollow ware		1					1	1		IC17-mC18	
3	209	172	CEW				?							3	1		?	
3	209	173	BW			1	hollow ware		1					1	1		IC17-mC18	

			description	dec	body	glzd	description	no. base	no. body	no. rim/edge	no. spout	no. handle	no. profile	no. shds			
3	209	182	BW			1	hollow ware		1					1	1		IC17-mC18
3	209	183	BW			3	cup	3						3	20		IC17-mC18
3	209	184	CEW				?							1	1		C19?
3	209	185	CEW				pancheon?		1					1	14		C19?
3	209	186	CEW			1	pancheon	1						1	12		C19
3	209	187	CEW			1	jar?		1					1	1		C18/C19? Reduced grey fabric, fine dark glaze on interior and exterior surfaces.
3	209	188	CrW			5	plate		1	4				5	4		eC19
3	209	189	CEW			1	?							1	1		C19?
3	209	190	CEW				?							1	1		C19?
3	209	201	SLCW			3	hollow ware		3					3	4		C18 Buff fabric with slip coat beneath dark glaze.
3	209	209	YW			1	hollow ware		1					1	1		C17
3	209	206	MPW				?							1	1		C17/C18
3	209	213	CEW				pancheon	1						1	1		C19
3	209	214	MPW				butter pot/ jar		2					2	38		IC17-C18
3	209	217	CEW				?							1	1		C19?
3	209	218	MPW				butter pot/ jar?		1					1	16		IC17-C18?
3	209	219	CEW			1	jar?		1					1	10		C19
3	209	220	CEW			1	pancheon			1				1	20	1	C18/C19
3	209	224	CEW				?		10					10	12		C19?
3	210	177	CrW			1	?							1	1		eC19
3	210	178	CEW			1	pancheon			1				1	12	1	C19
3	210	179	BStW			1	bowl?	1						1	32		C19 Derbyshire product.
3	210	180	CEW				pancheon?	1						1	8		C19?
3	212	203	YW		shallow turned lines on exterior	4	hollow ware		4					4	2		C17 Cross joins with 3 (209)? 216.
3	212	204	CEW				pancheon?			1				1	6	1	C19
3	212	207	CEW			1	pancheon		2					2	14		C19
3	212	208	CEW			1	pancheon			1				1	14	1	C18/C19
3	212	210	YW			1	hollow ware		1					1	1		C17 Small fragment - could also be a slipware.
3	212	215	YW		shallow turned lines on exterior	1	hollow ware		1					1	1		C17

			description	dec	body	glzd	description	no. base	no. body	no. rim/edge	no. spout	no. handle	no. profile	no. shds				
3	212	216	YW		shallow turned lines on exterior	1	hollow ware		1					1	1	1	C17	Cross joins with 3 (212) 203 & 3 'topsoil'.
3	212	222	MPW				butter pot			1				1	36	1	IC17-C18	Collared rim. Cross joins with 3 (209) 223.
3	212	223	MPW				butter pot		1					1	20		IC17-C18	Cross joins with 3 (209) 222.
3	224	226	IPW?			1	hollow ware?	1						1	8	1	C16?	Hard, pale orange fabric with frequent inclusions of small-medium, well-sorted sub-rounded quartz fragments. Glaze covering interior base is reduced to a matt grey appearance with occasional vitreous green flecks.
3	230	230	LMOW			1	hollow ware		1					1	19	1	IC15-C17?	Hard orange fabric with splashes of brown lead glaze. Possible pan or bowl?
3	231	231	MPW				jar/ cistern	1						1	92		IC16-C17	Dense purple fabric, unglazed save for a thin, patchy coating on the underside of the base.
3	232	225	MPW			1	jar/ cistern	1						1	58		IC16-C17	Dense purple fabric with reduced greenish iron-rich glaze on interior. Scarring and glaze run-off on underside of base indicates use as 'saggar' in firing of Cistercian ware.
3	232	227	MPW			1	jar/ cistern	1						1	6		IC16-C17	Dense purple fabric with reduced greenish iron-rich glaze on interior. Underside surface also reduced.
3	232	228	MPW				jar/ cistern			1				1	108	1	IC16-C17	Dense purple fabric, unglazed. Slightly everted and flattened rim (c.21cm dia.).
3	232	229	MPW			1	jar/ cistern	1						1	104		IC16-C17	Dense purple fabric, with reduced, greenish iron-rich glaze on interior base. Scarring and glaze run-off on underside of base indicates use as 'saggar' in firing of Cistercian ware.
3	u/s		CrW			8	plate	7		1				8	12	1	eC19	
3	u/s		PW	UGP (B)?		3	plate		1	2				3	6	1	e-mC19	Possible hint of UGP edge on incomplete rim sherd.
3	u/s		StW			2	jar	1	1					2	6		m-IC19	
3	Topsoil		YW		shallow turned lines on exterior	1	hollow ware		1					1	2		C17	Cross joins with 3 (209) 216.
3	Topsoil		BW			4	hollow ware		4					4	10		IC17-mC18	
3	Topsoil		MW			1	hollow ware	1						1	8		IC17-mC18	

			description	dec	body	glzd	description	no. base	no. body	no. rim/edge	no. spout	no. handle	no. profile	no. shds				
3	Topsoil		SLCW			1	hollow ware		1					1	1			C18
3	Topsoil		CEW				?							1	6			C19?
3	Topsoil		CrW			2	flatware?	1	1					2	1			eC19
4	301		CEW			2	pancheon?							5	12	1		C19?
4	301		MW			1	hollow ware		1					1	1	1		lC17-mC18
4	301		BW			1	hollow ware		1					1	1	1		lC17-mC18
4	301		PW	OGP (Pk & Yw)		2	saucer		2					2	1	1		eC19 Over-glaze painted dot-and-diaper pattern in pink, bounded by a yellow line.
4	301		PW	UGTP (B)		1	hollow ware		1					1	2	1		e-mC19
4	301		WW	UGTP (B)		1	plate	1						1	6	1		m-lC19 Asiatic Pheasants' print.
4	301		PW/ WW?			2	?							2	1			m-lC19?
4	304	4	CrW			5	owl		4	1				5	5	1		eC19
4	305	7	SLCW			1	hollow ware		1					1	1	1		C18 Buff fabric with iron-rich slip beneath dark glaze.
														2017	10937	294		

Key:		
Ware/ fabric descriptions		
<p>AgEW = agate earthenware; BBEW = buff-bodied earthenware; BC = bone china; BSGSW = brown salt-glazed stoneware; BStW = brown stoneware; Buff StW = buff stoneware; BW = blackware; CEW = coarse earthenware; CGW = coloured glaze ware; CistW = Cistercian ware; CrW = creamware; DptSGSW = dipped salt-glazed stoneware; GStW = grey stoneware; HW = horticultural ware; IPW = iron-poor ware; LMOW = late medieval orange ware; MPW = Midlands Purple ware; MW = mottled ware; PW = pearlware; RBEW = red-bodied earthenware; RefBW = refined blackware; RefYW = refined yellow ware; SB/ EgW = Shining Black/ Egyptian Ware; SLCW = slip-coated ware; SLDPW = slip-decorated pearlware; SLDYW = slip-decorated yellow ware; SLDWW = slip-decorated whiteware; SLW = slipware; StW = stoneware; WCEW = white coarse earthenware; WSGSW = white salt-glazed stoneware; WW = whiteware; YW = yellow ware.</p>		
Applied surface decoration		
<p>OGBP = over-glaze bat printed; OGG = over-glaze gilded; OGLP = over-glaze lithographic print; OGP = over-glaze painted; UGSpD = under-glaze sponge decorated; UGSpD & P = under-glaze sponge decorated & painted; UGP = under-glaze painted; UGTP = under-glaze transfer printed.</p>		
Colours		
<p>B = blue; Bk = black; Br = brown; G = green; Pk = pink; Poly = polychrome; Rd = red; Yw = yellow.</p>		